



Series 800 Walk-Behind Edger Operator's Manual



This Manual Includes:

*Safety Information • Operating Instructions
Maintenance Schedule • Tips for Better Operation
Illustrated Parts Breakdown*

**Please read and save these instructions.
For safety, read all instructions prior to operating machine.**

Table of Contents

Section	Page
General Information	
Serial Number Location	1
Table for BedShaper Information	1
Specifications	
Engine	1
Transmission	1
Bearings	1
Cutting Depth	1
Dimensions	1
Safety Instructions	
Before Operating	2
Operation	3
Maintenance	3
Safety & Instruction Decals	3
Operating Instructions	
Control Identification & Function	4
Adjusting Working Depth	4
Engaging & Disengaging Blade	5
Tips for Better Bed Shaping Results	5
Maintenance	
Table 5-1 Maintenance Chart	6
Illustrated Instructions for Maintenance	6-7
Adjustment- Dirt Scraper Gap	7
Cleaning- End of Season	7-8
Replacement & Repair Instructions	
Replace Drive Belts	8
Change Blade	8
Illustrated Parts Breakdown	
Main Frame & Drive Assembly	9-10
Blade Frame & Drive Assembly	11-12
Wheel Drive & Guard Assembly	13-14
Operations Assembly	15-16
Warranty	19

Section 1

General Information

Highlighted Information

Information that is of special importance has been highlighted with headings in boldface type. **Danger**, **Warning** and **Caution** identify safety-related information, further identified by the safety alert symbol Δ . **Important** identifies information requiring special attention since it deals with the possibility of damage to part or parts of Bed Shaper units. **Note** identifies information worthy of special attention.



Photo 1-1

Series and Serial Number Information

Both the series number and serial number are located on the mainframe of the Bed Shaper (see photo 1-1). The number in the upper box is the series number. The number in the lower box is the serial number. Please use these numbers when ordering replacement parts or when obtaining maintenance assistance. Record these numbers in the table below for easy access.

Fill in information:

BedShaper
Series Number _____

BedShaper
Serial Number _____

Date of Purchase _____

Dealer Name _____

Phone Number _____

Section 2

BedShaper Walk-Behind Specifications

Engine	10.5 hp Briggs or 9 hp Kawasaki
Transmission	hydrostatic, infinite speed control
Blade	Notched, spring steel
Bearings	roller
Frame	welded, formed steel
Gauge Wheel	single
Cutting Depth	1" - 4"
Depth Adjustment	pin, position
Total Width	43"
Total Length	51"
Total Height	43"
Blade Diameter	16 1/4"
Shipping Weight	365 lbs.

Section 3

Safety Instructions

The safety alert, Δ , means **Caution, Warning** or **Danger** concerning the operator's personal safety. Read, understand and follow the instructions listed with the safety alert. Failure to heed these instructions may result in personal injury.

BedShaper, Inc. designed and built the Walk-Behind Edger with the operator's safety as a prime concern. Many features have been included in the unit to prevent and protect the operator from personal injury. The operator must take safe operation seriously and take every precaution possible for safe operation. **Failure to follow the safety instructions contained in this manual may result in: personal injury, damage to equipment and property.**

If you have any questions concerning safety, operation, maintenance, setup or product comments, please contact your BedShaper dealer.

Before Operating:

1. Read, understand and follow the instructions and contents of this Operator's Manual before operating the unit. Be familiar with all controls and how to disengage them quickly. Additional Operator's Manuals for the BedShaper are available upon request by sending the series and serial numbers to:

BedShaper, Inc.
173 Green Acre Road
Lititz, PA 17543

2. Check area to be edged for foreign objects which may be thrown by the rotating blade. Pick up all sticks, stones, wire and any other debris.

3. Attention should be paid to areas that may possibly have buried hazards. Ask property owner about the presence of buried hazards before using the BedShaper. Hazards include: electrical wiring, water pipes, cable television wires, metal and plastic edging, irrigation pipes, roots, masonry, metal and other items that may cause damage or injury to persons, machine or property.

4. Never allow children to operate the BedShaper. Adults should not operate the BedShaper without reading the Operator's Manual.

5. Keep bystanders, especially children and pets, clear of the machine in operation. Do not operate the machine with bystanders in area.

6. Do not operate machine while barefoot or when wearing lightweight footwear. Wear protective footwear, preferably safety work boots.

7. Always wear safety glasses and adequate protective clothing. Do not wear loose fitting clothing that could be caught in moving parts. Never wear shorts. Safety shoes are recommended for the operator and may be required by some local ordinances and insurance policies.

8. Prolonged exposure to loud noise could cause hearing impairment or loss of hearing. OSHA approved hearing protection is recommended.

9. Keep all shields and safety devices fastened and in place. If a shield, safety device or decal is defective or damaged, repair or replace it **before operating machine.**

10. Do not alter safety control lever or safety devices at all.

11. Never attempt to adjust the machine while the engine running. Failure to wait until the engine and/or driveline comes to a complete stop may cause injury from moving parts.

12. After operating machine, blade may be hot enough to cause burns. Allow sufficient time- five or ten minutes is required- for the blade to cool before attempting to service, adjust, unclog or touch blade.

Operation:

1. Watch for hidden hazards when operating. Roots, pipes, wire, sticks and holes can be encountered quickly. Scout work area and remove hazards **before** operating machine.

2. Before adjusting or servicing BedShaper, wait for moving parts to come to a complete stop.

Maintenance:

1. **Disconnect the spark plug wire before servicing or adjusting BedShaper to prevent accidental starting.**

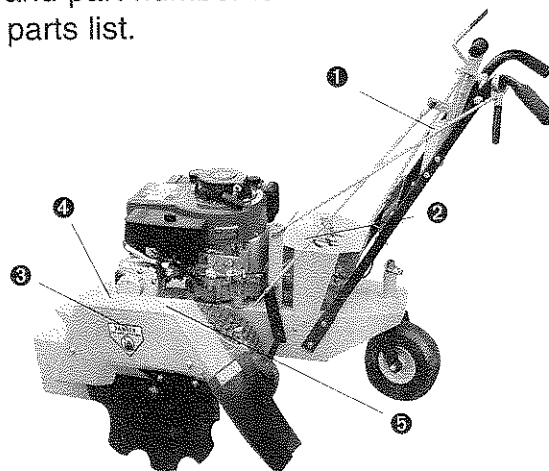
2. Make sure all fasteners are tight and all shields are in place and in good condition. Check blade mounting nut frequently to make sure it is tight.

3. Make only the maintenance adjustments described in this manual. Any unauthorized adjustments or modifications to the BedShaper may result in unsafe operating conditions and may void warranty.

4. Never alter or remove any safety devices on the unit. Safety devices are incorporated into the design for safe operation.

⚠ Safety and Instruction Decals

Safety and instruction decals are installed at the factory. If any decals are missing, damaged or illegible, replacements should be ordered and installed immediately. Decal and part number is listed below and in the parts list.



① BedShaper Decal	#18900
② Warning Decal	#18905
③ Danger Decal	#18906
④ Hot Area Decal	#18907
⑤ Underground Hazard Decal	#18908

Before Operating.

Follow Checklist, Below:

- Perform a visual inspection.
- Inspect shields and safety equipment.
- Inspect blade drive belts for proper tension and alignment.
- Check blade for secure mounting. **Gloves should be worn when handling blade-** it may be sharp enough to cause cuts.
- Adjust blade cutting height.
- Check blade engagement lever with engine running for proper operation. Blade should begin to turn when handle is approx. 1 1/2" from being fully seated. **Note:** see repair parts manual for additional adjustment.
- Perform any maintenance items according to maintenance chart on page 6.

Section 4

Operating Instructions

Control Identification & Function:

Before operating machine, become familiar with the controls and general operation of the BedShaper. Know the location, purpose and operation of the blade engagement lever, speed control and throttle.

❶ Blade Arm Lift Lever- LH side of handle assembly. (Photo 4-1)

The lift lever is used to raise the blade arm from the ground for transport. Pulling the lever towards the operator raises the blade arm to the transport position. The spring-loaded latch keeps the blade in the transport position. Releasing the latch and easing the lever forward will set the blade in the ground.

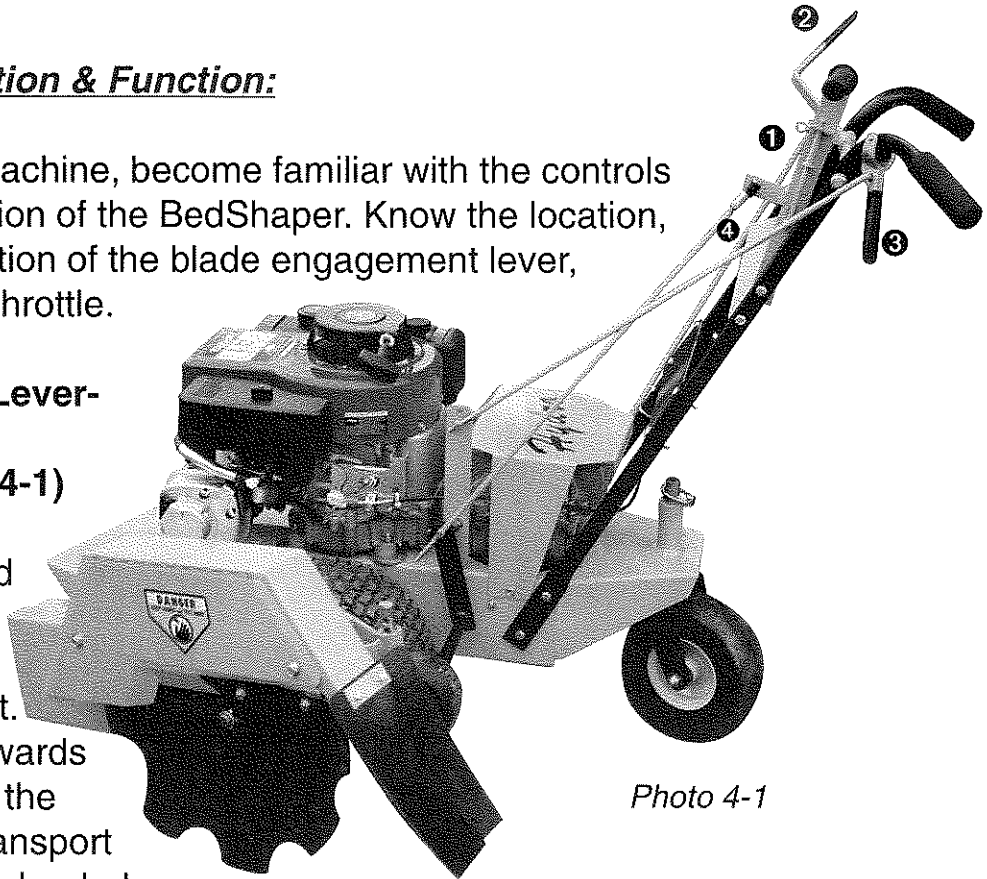


Photo 4-1

Adjusting Working Depth:

⚠ Caution
**Engine must be stopped before
adjusting working depth.**

Blade depth adjustment is controlled by a gauge wheel (see Photo 4-2). To adjust to a different cutting depth, lift blade arm, remove pin on gauge wheel, adjust to desired height. Replace pin.

The height of the BedShaper can be adjusted from 1" to 4".

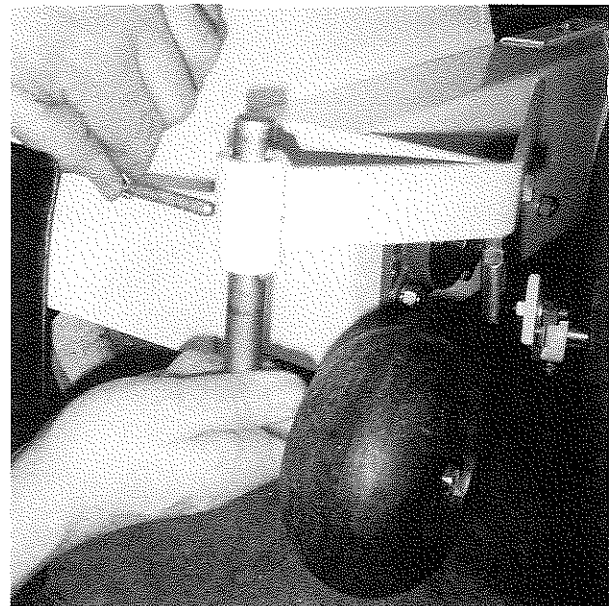


Photo 4-2

Engaging Blade:

1. Before engaging blade, be sure all bystanders, especially children and pets, are clear of operating area.
2. Blade should be out of the ground, in transport position.
3. Set engine speed about half throttle.
4. Engage blade lever. (photo 4-1)②
5. Adjust engine speed to desired setting.
6. Smoothly push blade lift lever forward to lower blade into the ground.
7. Engage transport lever smoothly to propel machine forward. (photo 4-1)③
8. Forward speed is controlled by throttle (photo 4-1)④

Important: Do not override blade engagement lever spring loaded safety shutoff.

Disengaging Blade:

Release blade engagement lever.

⚠ Caution

Always remove spark plug wire when leaving machine unattended. This prevents children and unauthorized operators from starting and operating unit.

⚠ Caution

If blade strikes a stationary object while operating, disengage blade engagement lever immediately. Stop engine. Disconnect spark plug wire, and open blade shield. Inspect machine thoroughly for damage. Make sure that blade is securely tightened.

Tips for Best Bed Shaping Results:

• **Blade Life:** Conditions will vary, but blade life will be about 10 hours of operation. Wear will be noticeable on the notches of the

blade. The sharper and deeper the notches, the better the cut. Blade speed and soil conditions affect wear. Replace the blade when worn. **Do not attempt to sharpen or recut notches. This may result in operator injury.**

• **Soil Conditions:** bed shaping will require the least amount of time, power and blade wear when the soil is damp. Pre-wetting the soil may be an option. The sod will cut cleaner and the remaining sod strip will stay intact for easier cleanup if damp.

• **Pre-Marking:** pre-mark the area to be shaped with marking paint or lime to ensure a consistent straight or curved edge. Never use solid objects or string as markers as these items may be thrown by the blade or wrap around the blade shaft.

• **Multiple Passes and Cutting Width:** when establishing a new bed or redesigning an existing bed, it is recommended that multiple passes be made. To facilitate removal of sod strips, the passes should be less than 3".

• **Speed:** A slow walking pace is good for safe operation and accuracy, while maintaining efficiency.

• **Buried Hazards:** be constantly aware of the possibility of buried hazards. Check with property owners about possible hazards **before** using the BedShaper. A little time spent investigating an area may prevent costly mistakes.

• **Cutting New Beds:**

- *Mark area to show the new bed outline.*
- *Make first cut approximately 1' in side outer border.*
- *Operate unit in counter clockwise direction, widening radius 3" in each rotation until desired bed size is achieved.*

• **Clogging:** If clogging occurs, disengage the blade engagement lever. Stop engine, make sure that all moving parts have come to a stop. Disconnect spark plug wire. Raise blade arm lift lever. Remove the two bolts which hold the hinged blade shield in place. Swing shield into servicing position. **⚠ Danger:** if unclogging is required, use a dowel or other such object to unclog the blade and shield. When finished unclogging, swing

shield back into place and fasten securely with bolts. Check blade bolt to insure it is tight. **⚠ Danger:** never attempt to operate machine without blade shield securely fastened.

⚠ Caution

Hot Blade: allow blade to cool before servicing. Blade may be hot enough to cause burns.

Section 5 **Maintenance**

BedShaper Maintenance Chart • Service Intervals

Item	Daily	25 Hrs.	Yearly	Page
Visual Inspection	•			
Engine		Refer to manual		
Clean Blade Shield	•			6
Check Wear on Blade	•			7
Lubricate Notched Blade Transfer Arm		•		7
Check Drive Belts		•		7
Lubricate Pulley Spindle Bearings			•	7
Chain Tension		•		8
End of Season Cleaning			•	7

Table 5-1

Illustrated Instructions For Maintenance:

⚠ Warning

Before any maintenance or adjustment to BedShaper is performed, always remember to: **stop engine.** Disconnect spark plug wire and allow components to cool before servicing.

Clean Blade Shield:

1. Make sure blade is cool.

2. Remove bolts from blade shield. Tilt hinged shield into servicing position.

3. Remove debris from shield and behind blade with a dowel or similar object. Never use hands- blade may be sharp.

4. Tilt shield back into position. Securely fasten shield with bolts. Never operate without shield securely fastened.

Check Wear of Blade:

1. Make sure blade is cool enough to handle (always wear gloves when handling blade).
2. Look for any excessive wear, chipping and abnormal wear. Replace if necessary (see section 6).
3. Check tightness of nut. Never operate machine when nut is not properly tightened. Nut should be tightened to 100 ft. lbs.

Check Blade Drive Belt:

1. Remove blade (see "change blade", page 8).
2. Remove bolts from belt drive shield. Remove shield.
2. Check condition of belt for excessive wear, fraying and abnormal conditions.
3. Replace with new belt, if necessary (see section 6).
4. Reinstall belt drive shields, fasten securely with bolts.
5. Replace blade per instructions.

Lubricate Pulley Spindle Bearings on Blade Arm (Photo 5-1):

1. Locate and clean fittings.①
2. Pump fittings full of grease using a hand pump. **Important:** do not overfill. Too much pressure will damage bearing seals.

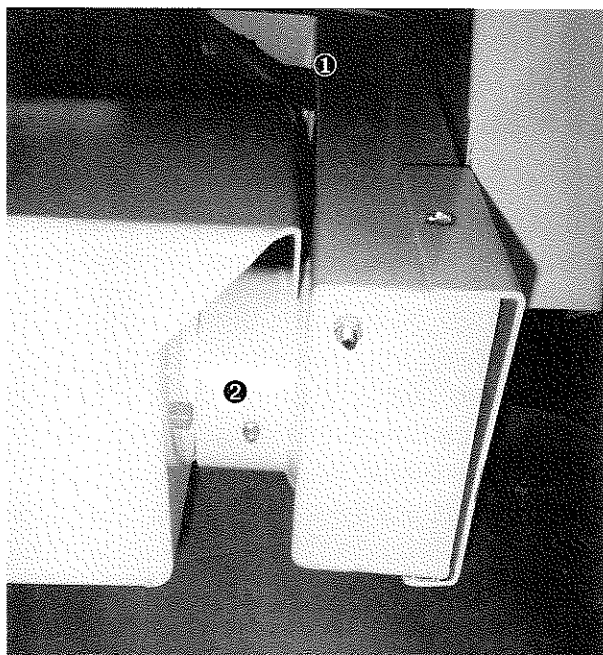


Photo 5-1

Adjustment- Dirt Scraper Gap (Photo 5-2):

1. Allow blade time to cool.
2. Raise BedShaper into transport position.
3. Examine gap between blade and dirt scraper. **Note:** recommended gap is 1/2".
4. Adjust gap, if necessary. Loosen the two bolts which secure dirt scraper. Adjust gap to 1/2". Snug bolts.
5. Rotate blade at least one full revolution. Check to see that blade does not contact dirt scraper. If contact is made, repeat step and increase gap. **Important:** dirt scraper must not contact rotating blade.
6. Tighten bolts on dirt scraper securely.

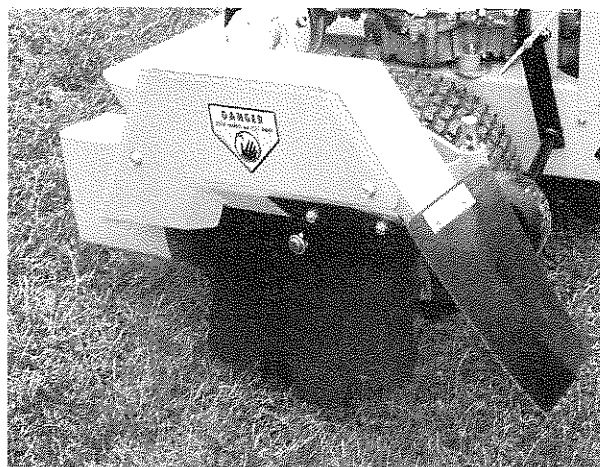


Photo 5-2

Lubricate Notched Blade Transfer Arm:

1. Locate and clean fittings on both sides of arm. (Photo 5-1)②.
2. Pump fittings full of grease using a hand pump. **Important:** do not overfill. Too much pressure will damage bearing seals.

Cleaning- End of Season:

1. Remove bolts from all shields.
2. Tilt or remove shields so that internal parts of machine are exposed.
3. Remove dirt and debris from machine using compressed air. **Important:** always use eye protection when using compressed air.
4. Wash machine with a mild soap and water to remove dirt and grease. **Important:** use eye protection when washing machine.

5. Allow machine to dry thoroughly.
6. Lubricate all fittings with grease and perform all maintenance checks to prevent corrosion and to ready machine for new season.

son.

7. Install all shields. Tighten bolts securely.
8. Cover machine with a protective covering. Store in a dry place.

Section 6

Replacement and Repair Instructions

Replace Blade Arm Drive Belt (Photo 6-1):

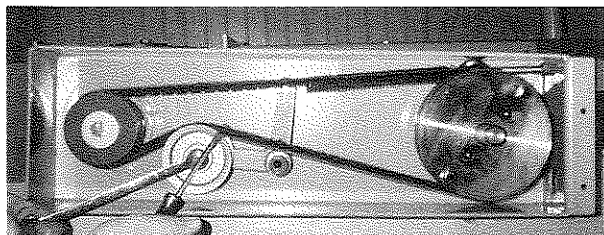


Photo 6-1 (Blade drive belt)

1. Follow all instructions for checking blade drive belt (page 7).
2. Pull idler pulley down using a 9/16" box wrench as illustrated in photo 6-1.
3. Using a large flat blade screwdriver under belt (as shown) gently lift belt over idler pulley.
4. Remove old belt and replace.
6. Reverse step 3.
7. Replace belt cover and blade.

Replace Main Drive Belts

Tilt machine forward sufficiently to gain access to belts on underside of unit. Place a block under rear wheel to keep machine in raised position safely.

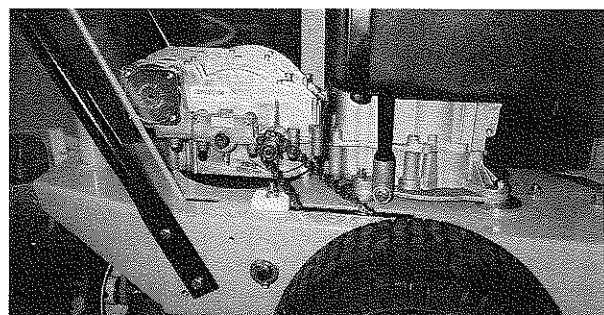


Photo 6-2

Transmission Drive Chain Adjustment (Photo 6-2):

Chain should be snug for proper operation. Adjust by loosening tension block and sliding forward. Do not over tighten chain.

Change Blade (Photo 6-3):

1. Remove bolts securing the hinged blade shield. Swing shield into servicing position.
2. Keep blade from turning by inserting a visegrips between a notch of the blade and the shield bracket.

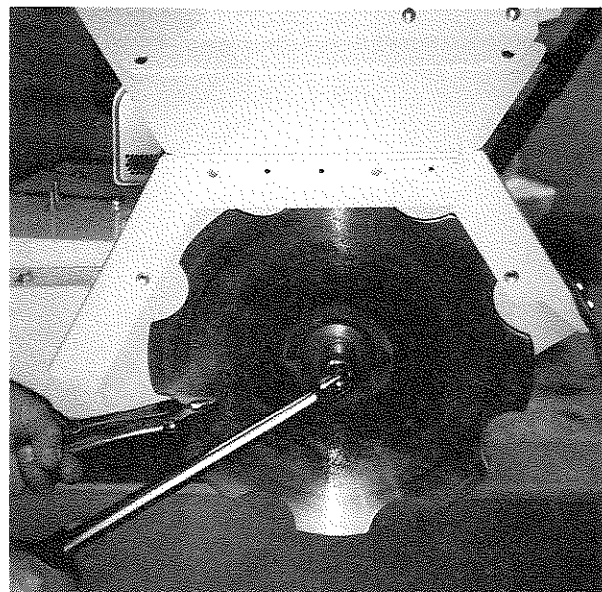
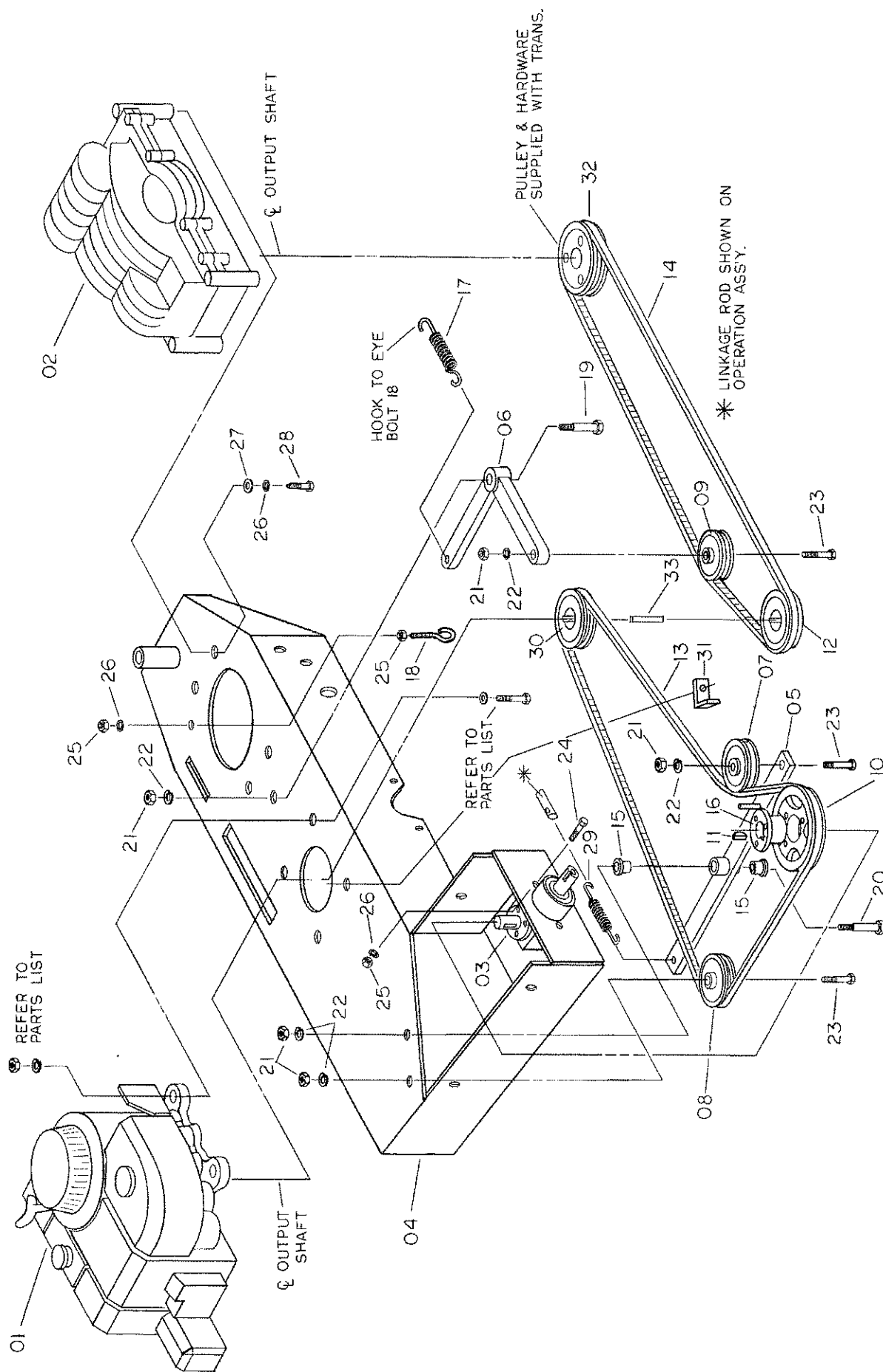


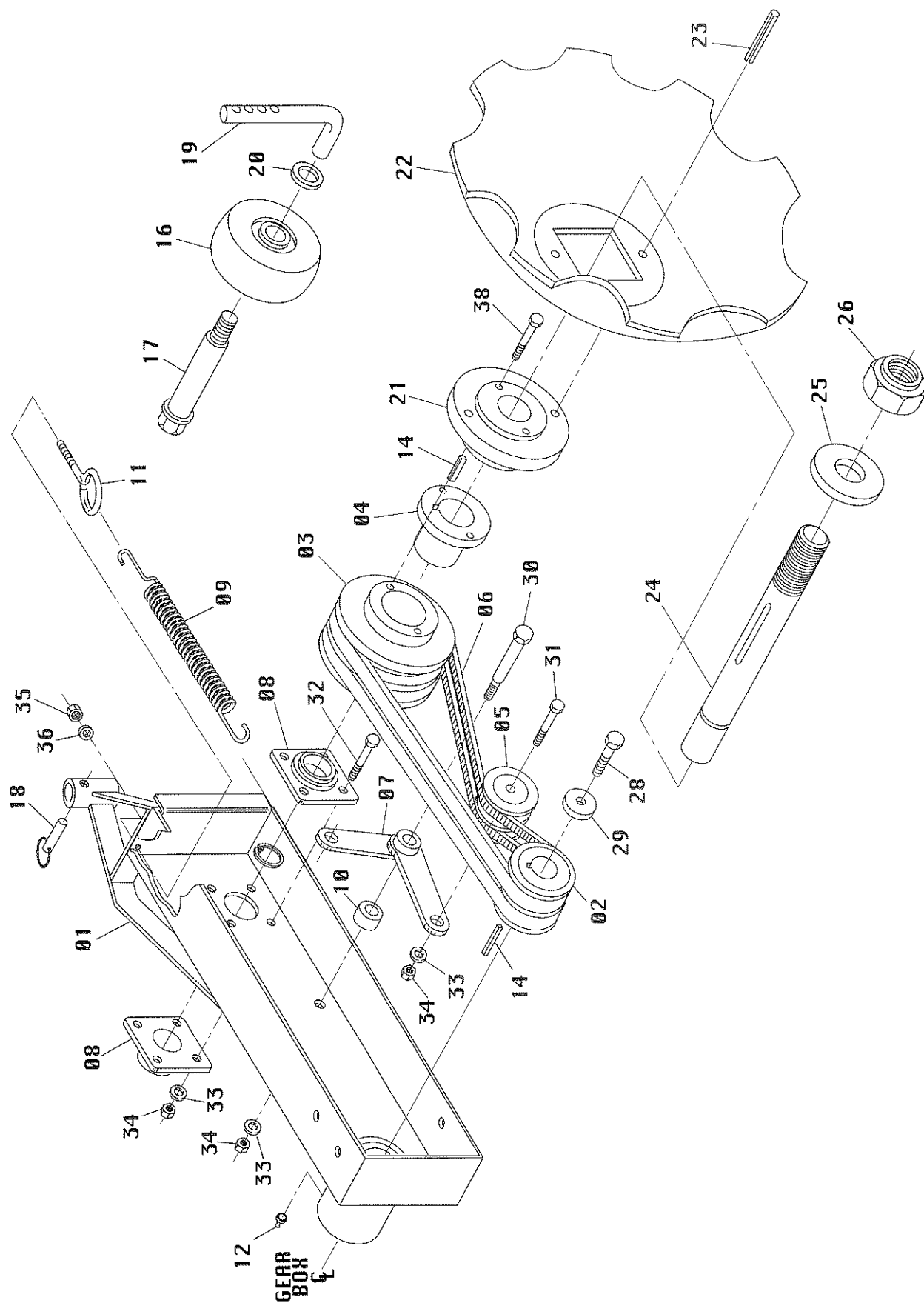
Photo 6-3

3. Loosen and remove the nut on the shaft. Remove washer. Remove the blade from the shaft.
4. Install the new blade on the shaft and align with the two guide pins. Replace locknut (if worn, replace with new one).
5. Block blade using visegrips as shown. Tighten nut to 100 ft. lbs. torque.
6. Tilt hinged shield into position. Install two bolts and tighten securely.

Main Frame & Drive Assembly



Blade Frame & Drive Assembly

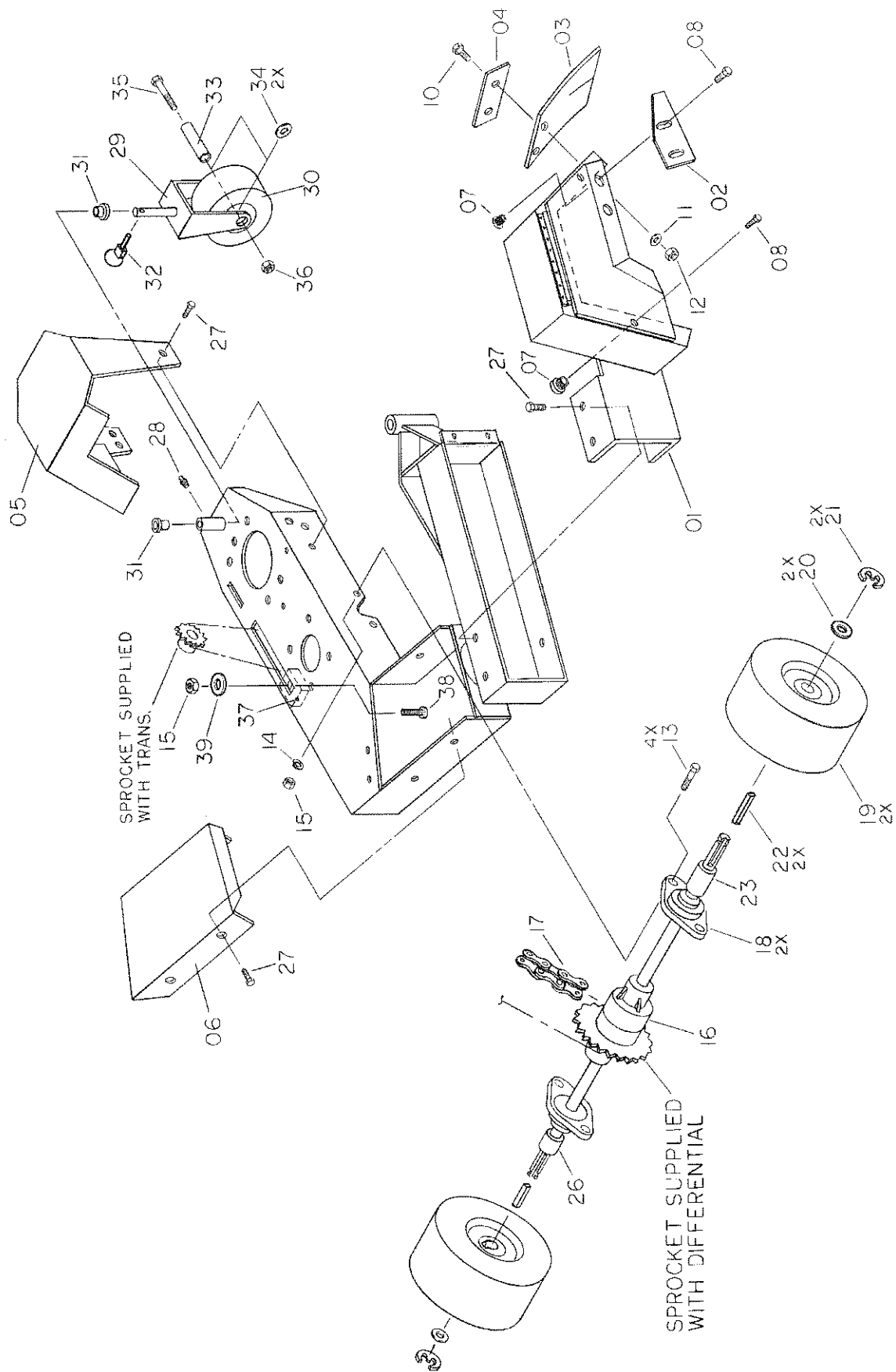


Item #	Part #	Description
01	18401	Arm housing
02	18302	Pulley, gear box drive
03	18304	Pulley, blade drive
04	18027	Hub, pulley 3/4
05	18020	Idler pulley
06	18202	Belt
07	18019	Idler arm
08	18025	Bearing flange
09	18018	Spring
10	18109	Set collar
11	18098	Eye bolt
12	18123	Grease fitting
13		
14	18058	Key
15		
16	18103	Rear wheel
17	18104	Wheel shoulder bolt
18	18101	Lynch pin
19	18426	Shank
20		3/8" flat washer

Item #	Part #	Description
21	18029	Blade hub
22	19233	Disc blade
23	18028	Dowel pin
24	18031	Blade shaft
25	18060	Blade washer
26	18061	3/4" nylon lock nut
27	18014	Bearing
28		5/16" x 1 1/2" hex head bolt
29		5/16" flat washer
30	18022	Shoulder bolt
31		3/8" x 1 3/4" hex head bolt
32	18083	3/8" x 1 1/2" hex head bolt
33		3/8" lock washer
34	18080	3/8" hex nut
35		5/16" hex nut
36		5/16" lock washer
37	18039	Snap ring
38	18126	1/4" socket head cap screw

Blade Frame & Drive Assembly

Wheel Drive & Guard Assembly

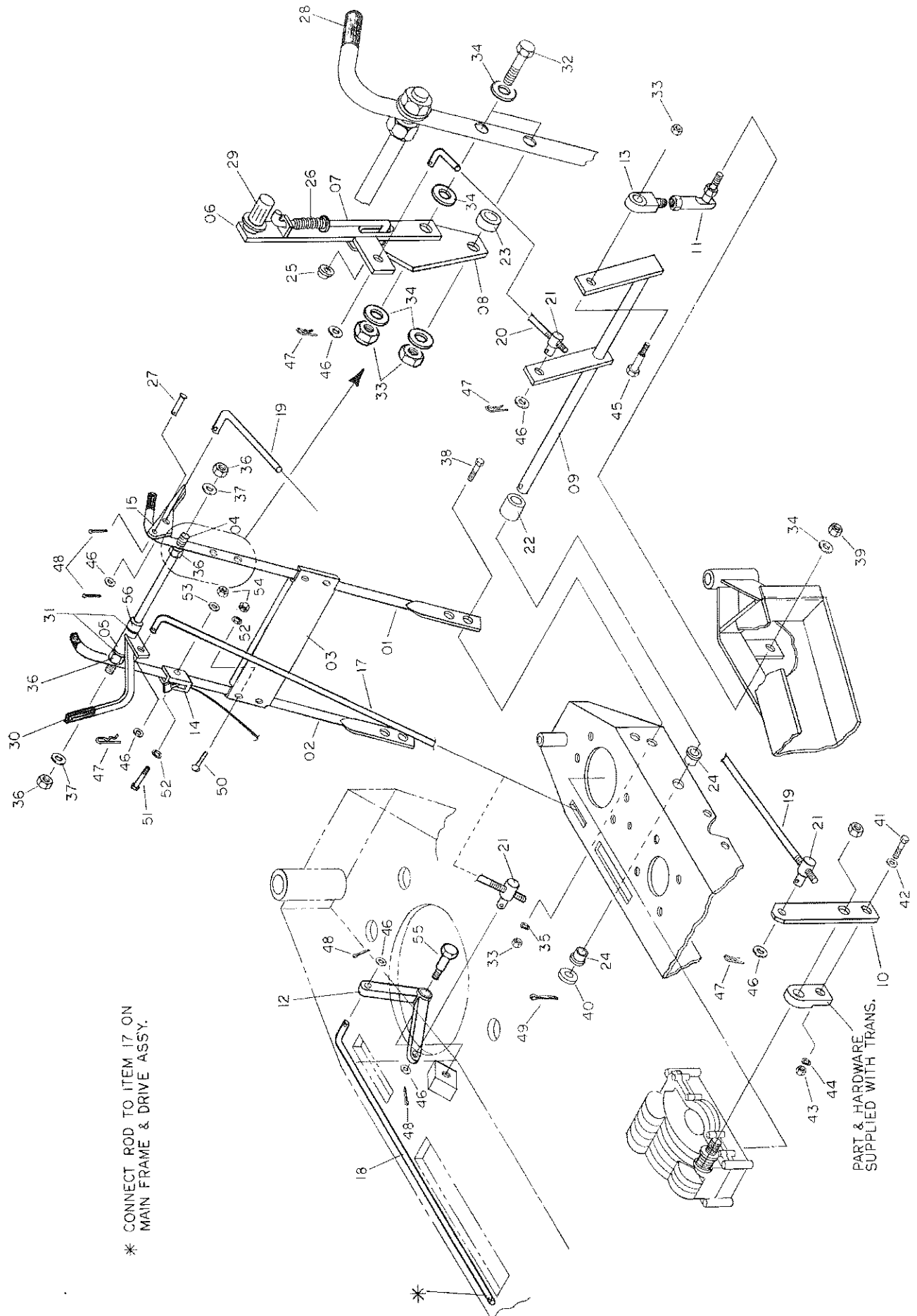


Item #	Part #	Description
01	18406	Blade/belt cover
02	18408	Blade scraper
03	18205	Mud flap
04	18206	Mud flap clamp
05	18410	Transmission cover
06	18405	Front belt cover
07	18043	Nutsert, 5/16"
08		5/16" x 3/4" hex head bolt
09		
10	18080	1/4" x 3/4" hex head bolt
11	18077	1/4" flat washer
12		1/4" hex nut
13		5/16" x 1 1/2" hex head bolt
14		5/16" lock washer
15		5/16" hex nut
16	18501	Differential unit
17	18306	Roller chain
18	18316	Bearing axle
19	18313	Drive wheel assembly
20		3/4" flat washer
21	18030	E-clip wheel
22	18055	Key, drive wheel
23	18414	Wheel spacer

Item #	Part #	Description
24		
25		
26	18415	Wheel spacer
27		1/4" x 3/4" hex head bolt
28	18123	grease fitting
29	18125	Fork
30	18127	Wheel, tire assembly (caster)
31	18128	Bushing flange
32	18124	Lynch pin
33	18130	Sleeve
34	18129	Spacer
35	18126	1/2" x 5 1/2" hex bolt
36		1/2" hex nut
37	18307	Chain tensioner
38		5/16" x 2" hex bolt
39	18309	Spring washer

Wheel Drive & Guard Assembly

Operations Assembly



Item #	Part #	Description
01	18402	Handle, left
02	18403	Handle, right
03	18411	Handle support
04	18412	Handle control bar
05	18413	Blade control lever
06	18422	Lift lever
07	18421	Latch
08	18423	Quadrant
09	18417	Lift lever
10	18419	Lever travel control
11	18032	Ball joint
12	18021	Pivot arm
13	18033	Ball joint
14	18318	Throttle control
15	18301	Lever
17	18424	Rod travel, long
18	18435	
19	18420	Rod hydro
20	18416	Lift rod
21	18113	Adjustable swivel
22	18427	Rocker spacer
23	18430	Quadrant spacer
24	18118	Bushing flange
25	18023	Push nut
26	18120	Latch spring
27	18305	Pin
28	18114	Handle grip
29	18119	Idler arm
30	18115	Grip

Item #	Part #	Description
31		
31	18110	Bushing, nylon
32		3/8" x 2 1/2" hex bolt
33		3/8" hex nut
34		3/8" flat washer
35		3/8" lock washer
36		1/2" hex nut
37		1/2" flat washer
38		3/8" x 1" x 32 hex bolt
39		3/8" x 32 hex nut
40		3/4" flat washer
41		5/16" x 1" hex bolt
42		5/16" flat washer
43		5/16" hex nut
44		5/16" lock washer
45	18082	3/8" x 1 1/4" hex bolt
46	18073	5/16" flat washer
47	18122	Cotter pin
48	18063	Cotter pin 1/8" x 1"
49		Cotter pin 3/16" x 1 1/2"
50		1/4" x 1 1/2" carriage bolt
51		1/4" x 2" hex bolt
52		1/4" lock washer
53		1/4" flat washer
54		1/4" hex nut
55	18112	Shoulder bolt

Operations Assembly

Warranty

Limited Warranty for Series 800 BedShaper:

BedShaper, Inc. guarantees this machine to be free from defects in material and workmanship for a period of one (1) year from date of purchase. If the machine is used for rental purposes, the warranty is limited to ninety (90) days. BedShaper, Inc. will, at its option, repair or replace any part which is found to defective.

All warranty work is to be performed by an authorized BedShaper dealer. Repairs made by unauthorized personnel may result void the warranty. Upon request, parts are to be shipped to BedShaper, Inc. for inspection, with transportation charges prepaid.

Any charges for making service calls and/or transport of the BedShaper to and from the place of inspection and/or warranty work will be the responsibility of the owner, not BedShaper, Inc.

BedShaper will not honor warranty claims determined to be caused by accident, abuse, misuse, alterations and improper maintenance of the machine.

The warranty expressed in this limited warranty is the only warranty that will apply on this machine. No dealer, distributor or individual is authorized to amend, modify or extend this warranty in any way.

Engines used in the manufacture of BedShaper units are warranted by the engine manufacturer. No other warranty is implied.

Certain drive components are warranted by their manufacturer. See enclosed warranty information.