

- Attach the Velke hitch (and adapter plate if needed—Fig.3) to the rear face of the mower (never on the top face) so that the center of the hitch pin is between 11.5 and 12 inches from the ground. Hitch can be turned over as needed to use existing holes in mower and to attain proper hitch height. If you need to drill holes in the mower, make sure the hitch is level to the mower before marking hole locations. Mark with a center punch for precise drilling. Make sure you don't damage parts behind surface when drilling. Drill 3/8" holes. Install the bolts from the back as needed to avoid bolt end contact with pulleys, belts, etc.
- In many cases the handlebars should be raised as high as they will go for user comfort. This should be done before making the latch or chain/hook adjustments in the next two steps.
- If attaching to a Wright, Velke Mower, adjust the storage latch and release lever as necessary. Fig.2
- If attaching to any other brand mower, attach the chain forward and centered to the mower. Again, if you need to drill, be careful not to damage parts behind surface (5/16" hole). Attach the hook so that the Velke hangs up as high as possible with just enough slack for unhooking it. Cut off excess chain. Fig.3
- Grease the wheel bearings and vertical pivot before using. Access the wheel zerk from the bottom of the platform while it's hanging under the handlebars.
No need to grease the hitch pivot. Those bushings can be used dry (no mess when handling hitch pin).
- WARNING—Do not ride while stepping on rubber wheel cover. Tire and/or wheel cover wear may result.
- READ THE SAFETY INSTRUCTIONS NOW AND REQUIRE EVERY USER TO READ IT BEFORE USING. "ENJOY"

WARNING
READ THIS BEFORE USING



WARNING
READ THIS BEFORE USING

VELKE SAFETY WARNINGS

- 1. Do not use the Velke sulky until you are completely familiar with the operation of the particular mower that it is attached to. We recommend at least one month experience walking behind the mower before riding.**
- 2. Make sure all safety equipment provided with the mower is in operating order. This includes operator presence devices that will shut the mower off in case you let go of the handles.**
- 3. Wear thick-soled, high-top leather work boots. No bare feet!**
- 4. Do not attempt to operate the mower in reverse gear while standing on the velke sulky.**
- 5. Operate the mower at slower speeds until you become familiar with how the Velke sulky handles. It won't be long before it becomes natural. Some users compare it with skiing.**
- 6. Do not operate the mower faster than you could walk comfortably. Speeding is dangerous even when trotting (or running) behind a mower. Sudden stops from excessive speed may cause serious injury. The Velke will make you more efficient by just maintaining a healthy pace through the day without speeding.**
- 7. Never use any mower near any by-standers in case you lose control or objects are thrown from the mower.**
- 8. Do not allow inexperienced people to use the Velke until they have read and understand this sheet and after they have significant experience walking behind a commercial/industrial walk-behind mower.**
- 9. Do not use the Velke sulky if any parts become loose. Examine the moving parts each time you use it. Look for loose or missing bolts, cotter or hair pins and replace immediately.**

Wright Manufacturing, Inc., the manufacturer of the Velke sulky, thanks you for purchasing this new product. We're working to help you make money. Please write or call us if you would like to receive product update information or if you have any questions about its use or installation. We're here to give you 100% satisfaction. Our local Velke dealers are authorized to service and sell our product in your area. Please give them your support.

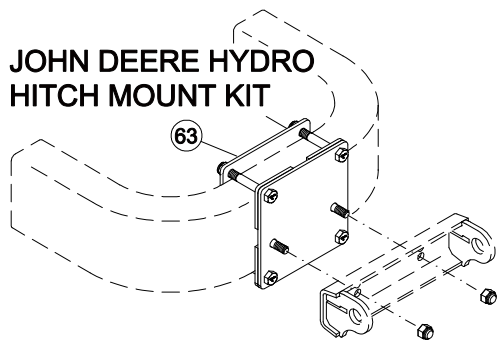


4600X Wedgewood Blvd., Frederick, Maryland, 21703 U.S.A.
• ph.301.360.9810 • fax.301.360.9820

©1991-2005 Wright Manufacturing, Inc. All rights reserved. Velke, Grass Gobbler, Gobbler and Leaf Gobbler are trademarks of Wright Manufacturing, Inc. Rev. 4/11/2005

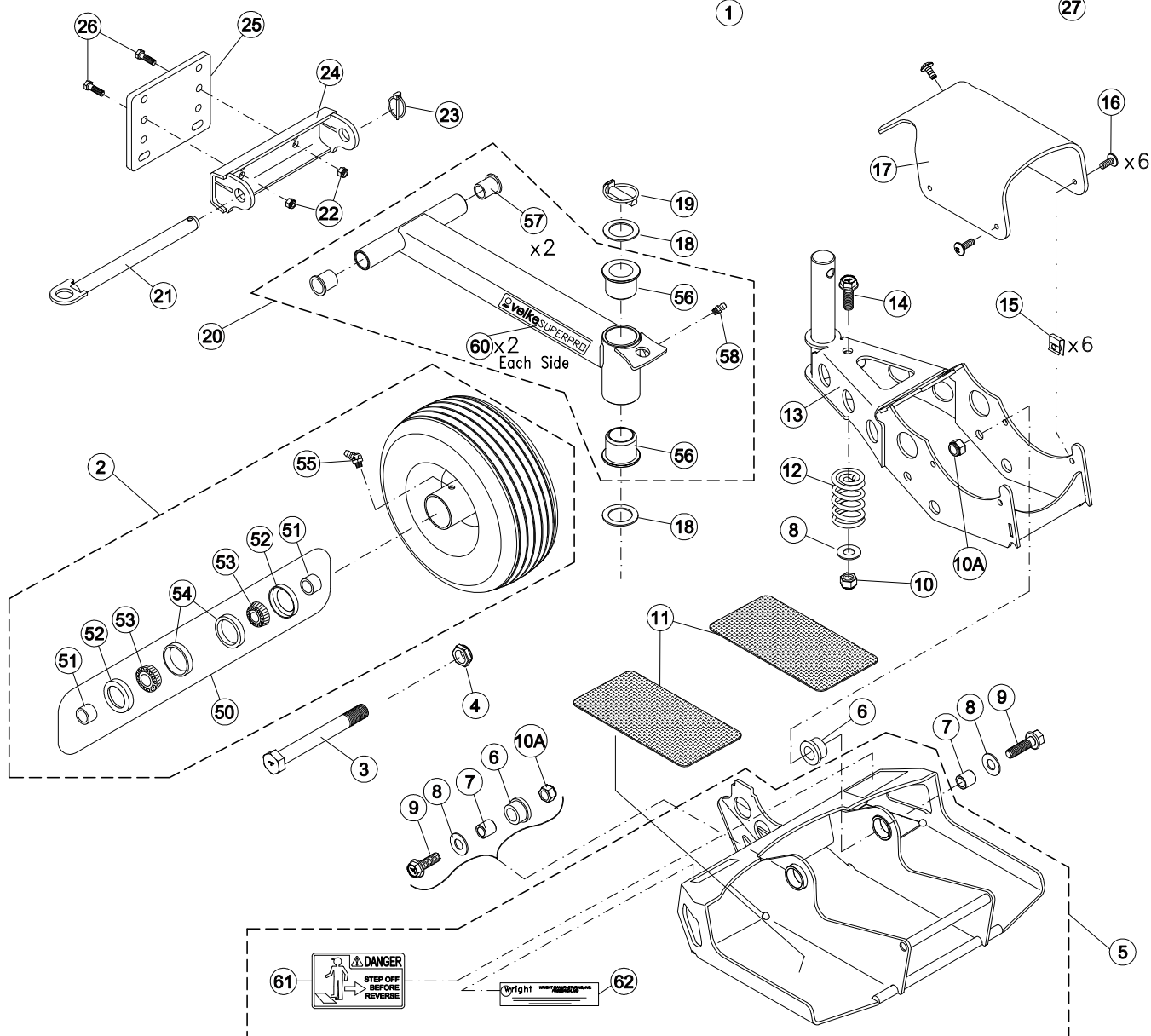
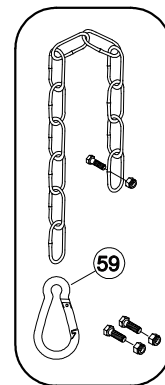
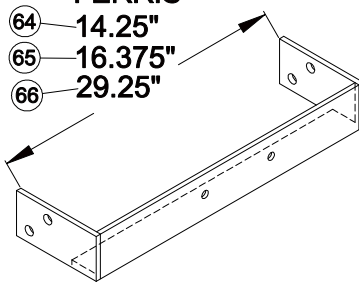
\\Server011\Company\Marketing\Product Specific Documents\Velke\Velke Installation 041105.p65

JOHN DEERE HYDRO HITCH MOUNT KIT



FERRIS

- 64 14.25"
- 65 16.375"
- 66 29.25"



PARTS LIST

REF #	PN	DESCRIPTION	-WR QTY	All Other QTY
		PRODUCT MODEL		
1	VSP-WV	VELKE, SUPER PRO, Wright Orange [ADAPTER & KIT (REF# 27) NOT INCLUDED]	1	1
	VSP-B	VELKE, SUPER PRO -Black		
	VSP-R	VELKE, SUPER PRO -Red		
	VSP-SC	VELKE, SUPER PRO -Scag Orange [SC]		
		TIRE/AXLE ASSY		
2	72460024	VELKE SUPER PRO WHEEL ASSEMBLY	1	1
3	11990119	Axle Bolt 3/4-10 x 6" GRADE 5	1	1
4	12990026	NUT, NYLOCK JAM 3/4-10 Z	1	1
		PLATFORM/YOKE ASSY		
5	93210001	PLATFORM WELDMENT ASSEMBLY, VELKE SUPER PRO, Wright Orange	1	1
	91210001			
	92210001	PLATFORM WELDMENT ASSEMBLY -Red		
	94210001	PLATFORM WELDMENT ASSEMBLY -Scag Orange [SC]		
6	17460005	BUSGIN, RUBBER, PUSH ARM	2	2
7	96460003	FRONT DECK LIFT AXEL BUSHING SPANNER , WSES	2	2
8	13990002	WASHER, FLAT USS Z	3	3
9	11990055	BOLT, FLANGE 1/2-20 X 1-1/2 Z5	2	2
10	12990055	NUT, NYLOCK 1/2-13	1	1
10A	12990018	NUT, NYLOCK JAM 1/2-20	2	2
11	17210000	FOOTPAD, VEKE SUPER PRO, BLACK GRIT	2	2
12	16410013	SPRING	1	1
13	93210002	WHEEL YOKE WELDMENT, VELKE SUPER PRO, WRIGHT ORANGE	1	1
	91210002	WHEEL YOKE WELDMENT, VELKE SUPER PRO -Black		
	92210002	WHEEL YOKE WELDMENT, VELKE SUPER PRO -Red		
	94210002	WHEEL YOKE WELDMENT, VELKE SUPER PRO -Scag Orange		
14	11990015	BOLT, FLANGE 1/2-13 X 1-3/4 Z5	1	1
15	12990044	NUT, U 1/4-20 7GA	6	6
16	11990024	TRUSS HD MACH 1/4-20 X 3/4 SS	6	6
17	72460025	SSV WHEEL COVER [RUBBERIZED FENDER]	1	1
		ARM ASSY		
18	13990023	MACH BUSH, 1-1/4 ID X 1-7/8 OD X 14GA	2	2
19	15990013	LINCH PIN, 7/16 FOR CASTERS	1	1
20	93220002	ARM WELDMENT, VELKE SUPER PRO, WRIGHT ORANGE	1	1
	91220002	ARM WELDMENT, VELKE SUPER PRO -Black		
	92220002	ARM WELDMENT, VELKE SUPER PRO -Red		
	94220002	ARM WELDMENT, VELKE SUPER PRO -Scag Orange [SC]		
		HITCH ASSY		
21	96230001	HITCH PIVOT PIN WELDMENT, VELKE SUPER PRO, PLATED	1	1
22	12990020	NUT, NYLOC 3/8-16	2	2
23	VKXLPIN	LINCH PIN X2 AXEL	1	1
24	91230001	HITCH WELDMENT, VELKE SUPER PRO, Black	1	1
25	VADAPTER	ADAPTER PLATE FOR VELKE	0	1
26	11990026	BOLT, HEX 3/8-16 X 1 Z5	2	2
27	VELKIT2-2	HARDWARE KIT FOR VELKE	0	1
*	LUBE WARNING	Literature - Bearing Lube Warning	1	1
*	PRODUCT BAG, VSP	Product Literature Bag includes 1 each of:	1	1
		Literature - VSP Instructions/IPL/Safety		
		Literature - Four Best Workers		
		Literature - Registration		
		Plastic Bag, 9X12X.002		
*	BOX, VELKE SUPER PRO	Packaging , Box	1	1

* Shipped with product



OPTIONAL MAINTENANCE KITS/PARTS/ACCESSORIES

TIRE/AXLE ASSY		
50	98460019	Wheel Bearing Kit (includes 2 each of 51-54):
51	77460004	Spacer
52	77460005	Seal
53	77460006	Bearing
54	77460007	Tapered Roller Bearing Race
55	VKWHLZERK	Grease fitting for Wheel
ARM ASSY		
56	14990003	Vertical Pivot Bushings
57	25410007	Plastic Hitch Bushings
58	15990006	Grease fitting, 3/16 Threaded
SNAP CHAIN KIT		
59	VSNAP	Spring Snap for chain
DECALS		
60	76490072	DECAL, velkeSUPERPRO
61	76490060	DECAL, DANGER- Step off before reverse
62	76490075	Patent Decal
HITCH MOUNT KITS (optional)		
63	VK-ADPT-JD	JOHN DEERE HITCH MOUNT KIT
64	VK-ADPT-FE	Ferris 14.25" Wide Hitch Mount Bracket
65	VK-ADPT-FE16	Ferris 16.375" Wide Hitch Mount Bracket
66	VK-ADPT-FE29	Ferris 29.25" Wide Hitch Mount Bracket

DO NOT REMOVE!

Except By Owner/User

**IMPORTANT SAFETY AND OPERATIONS
INFORMATION INSIDE**