

(1) sostituisce 30000276



700
AMERICA

MOTOR ACCESORIES
(710-712-718-722-732)

ACCESORIOS MOTOR
ACCESSORI MOTORE

ACCESSOIRES MOTEUR
MOTORZUBEHÖRTEILE

DALLA MACCHINA
DE LA MAQUINA
DE LA MACHINE
FROM THE MACHINE
AB DER MASCHINE

AGGIORNAMENTO

REVISION

MISE A JOUR

APLAZAMIENTO

★ N.

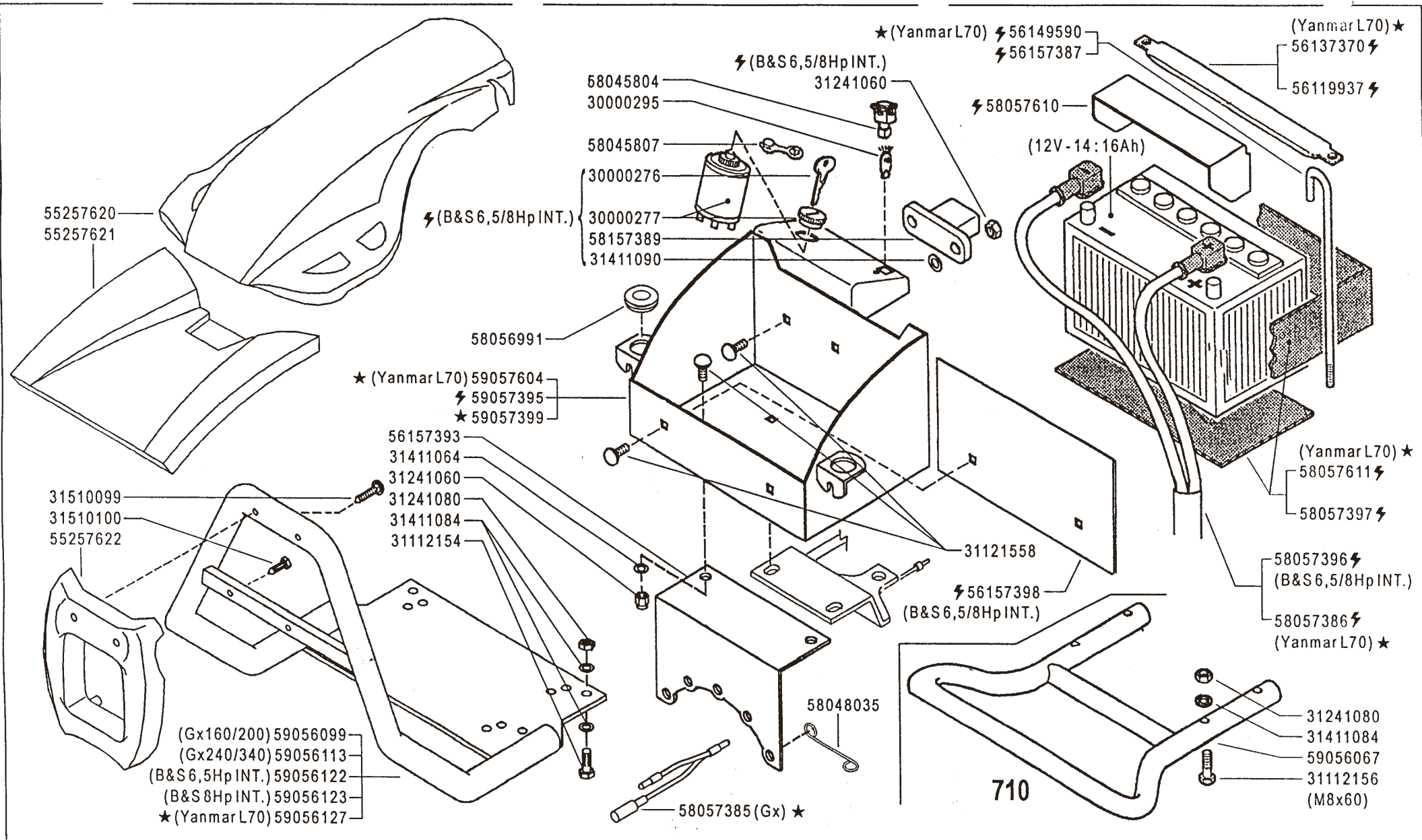
ANPASSUNG

01

Rev.
2

01/2007

ZENNE



700
AMERICA

MOTOR ACCESORIES
(710-712-718-722-732)

ACCESORIOS MOTOR
ACCESSORI MOTORE

ACCESSOIRES MOTEUR
MOTORZUBEHÖRTEILE

DALLA MACCHINA
DE LA MAQUINA
DE LA MACHINE
FROM THE MACHINE
AB DER MASCHINE

AGGIORNAMENTO

REVISION

MISE A JOUR

APLAZAMIENTO

ANPASSUNG

01

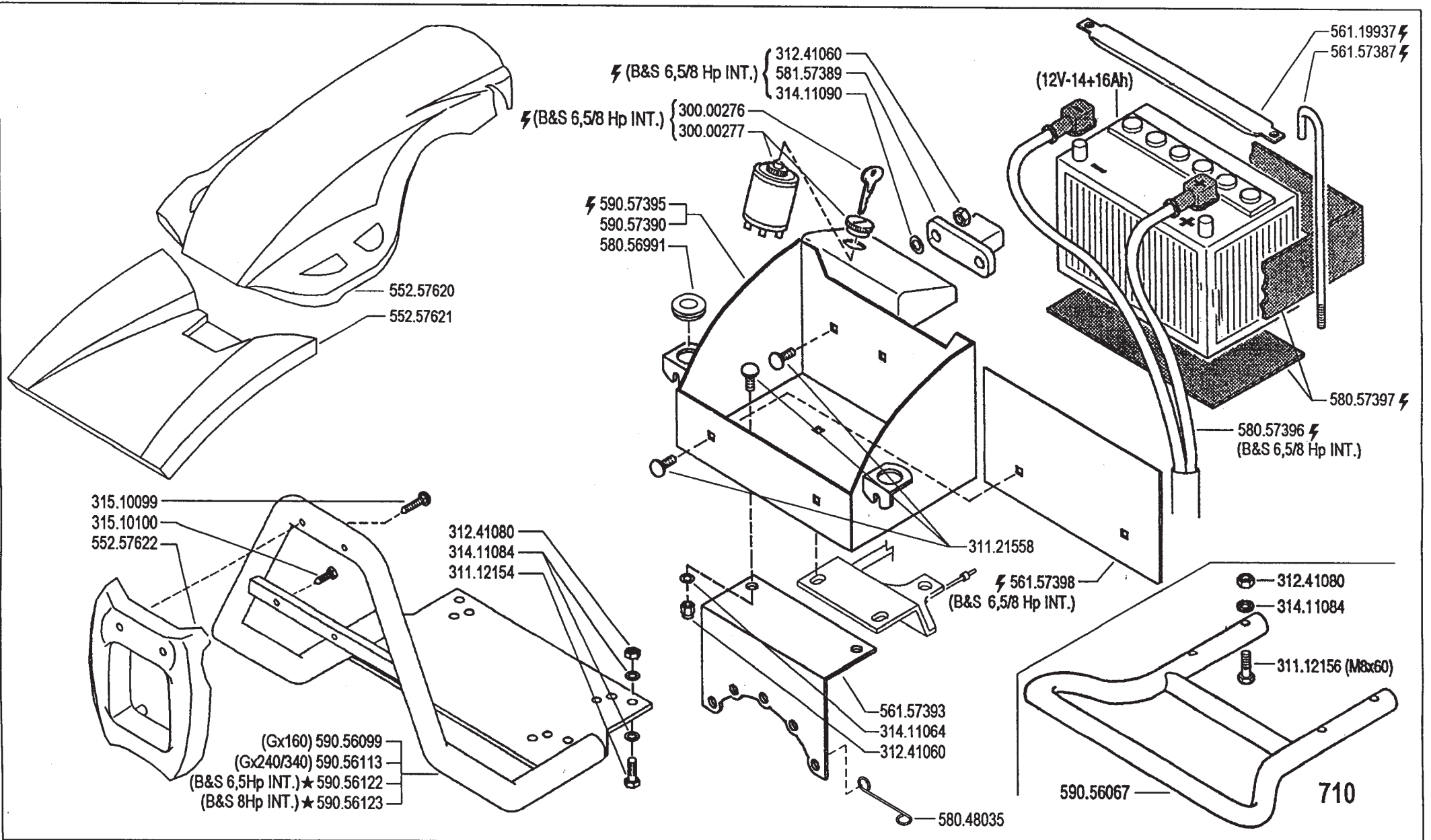
01/2006

Rev.

1

★N.

ZENNE



	700 AMERICA	MOTOR ACCESORIES (710-712-718-722-732)		DALLA MACCHINA DE LA MAQUINA DE LA MACHINE FROM THE MACHINE AB DER MASCHINE	Rev. 01 0
		ACCESORIOS MOTOR ACCESSORI MOTORE	ACCESSOIRES MOTEUR MOTORZUBEHÖRTEILE		

(HONDA Gx 160/200) (5/16 x 7/8) 31100003

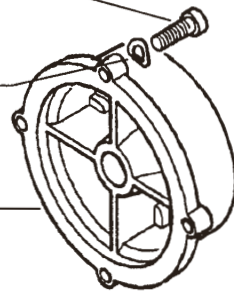
(Honda Gx240/340) (3/8 x 1") 31100015

31423105

(HONDA Gx 160/200) 31423084

(Honda Gx240/340) 53156150

(HONDA Gx 160/200) 53247488



31211080

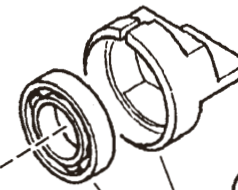
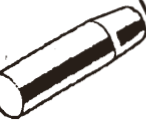
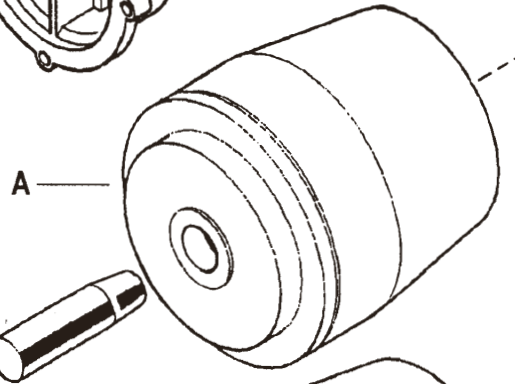
31423084

31312088 (M8x40)



50956262

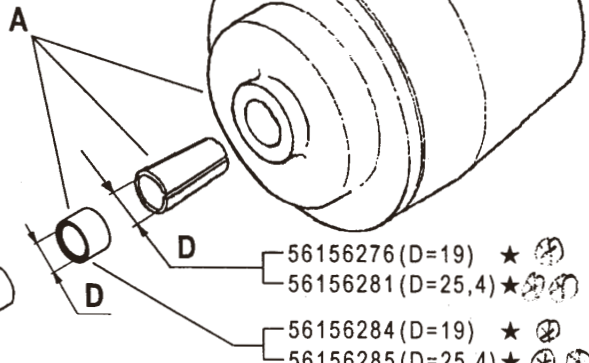
MOTORE ENGINE MOTEUR MOTOR MOTOR	FRIZIONE CLUTCH A EMBRAYAGE EMBRAGUE KUPPLUNG
Honda Gx 160/200 D=19	59256275 ★(1)
Honda Gx 240 D=25,4	59256279 ★(3)
Honda Gx 340 D=25,4	59256280 ★(2)
Yanmar L70AE	59247884



55157609

52447896

37112173 (17x40x12)



56156276 (D=19) ★ ⊕

56156281 (D=25,4) ★ ⊕ ⊕

56156284 (D=19) ★ ⊕

56156285 (D=25,4) ★ ⊕ ⊕



NON SMONTARE MAI LA FRIZIONE
NEVER DISASSEMBLE THE CLUTCH
NE DEMONTER JAMAIS L'EMBRAYAGE
NIEMALS DIE KUPPLUNG AUSBAUEN
NO DESMONTAR JAMAS EL EMBRAGUE

⊕ dal n. 779337

⊕ dal n. 779547

(3) sostituisce 59256253

(2) sostituisce 59256257 *7112-085 1311PYA(m.)*

(1) sostituisce 59256265



700
AMERICA

CLUTCH
(710-712-718-722-732)

EMBRAGUE
FRIZIONE A CONO AUTOVENTILANTE

EMBRAYAGE
KUPPLUNG

DALLA MACCHINA
DE LA MAQUINA
DE LA MACHINE
FROM THE MACHINE
AB DER MASCHINE

CHIEDERE A S.A.T.

ASK TO S.A.T.

DEMANDER A S.A.T.

SOLICITAR EL S.A.T.

ANFRAGEN DER S.A.T.

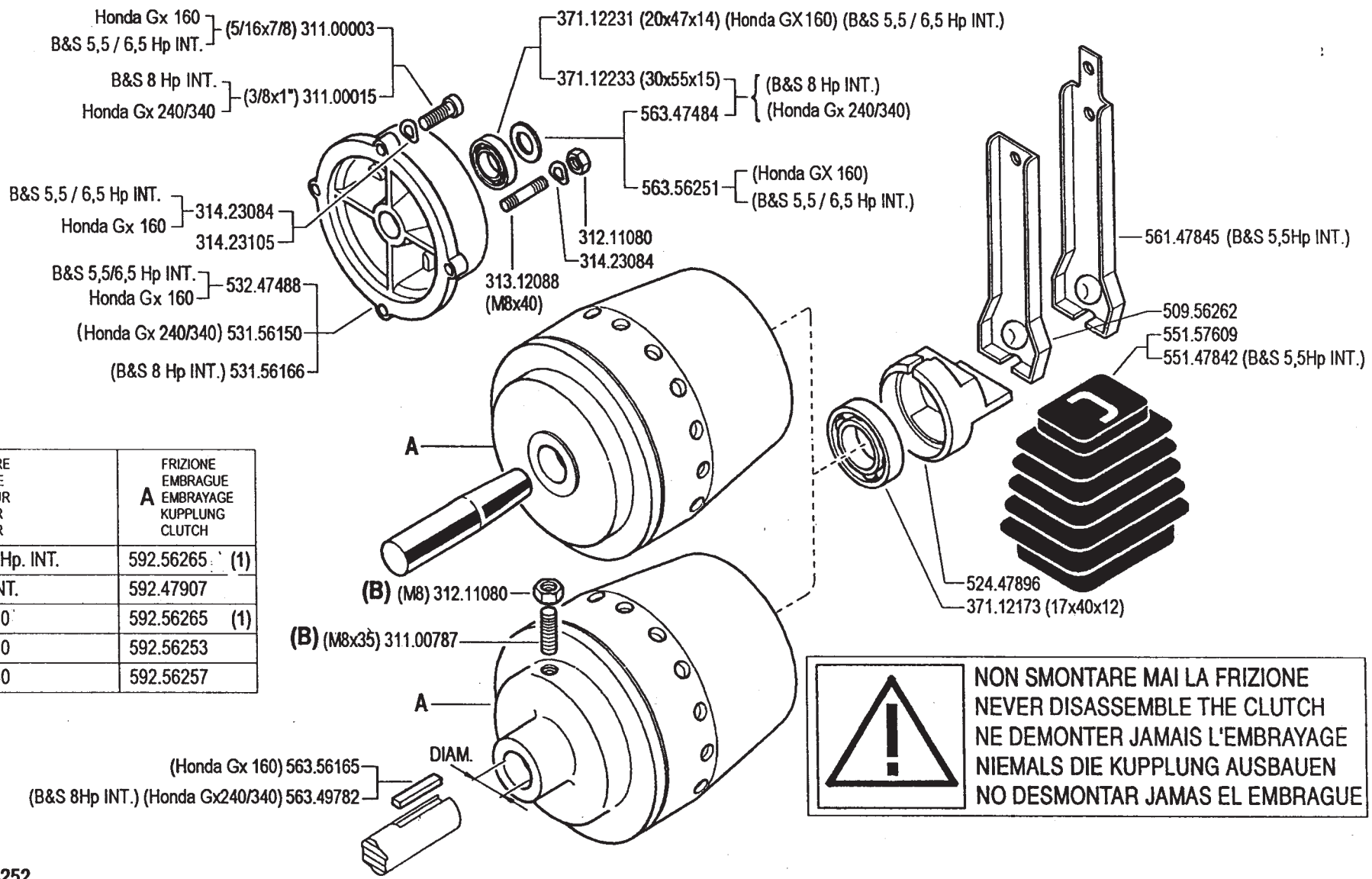
★ N.

02 1

11/2006

Rev.

ZENNE



MOTORE ENGINE MOTEUR MOTOR MOTOR	FRIZIONE EMBRAGUE EMBRAYAGE KUPPLUNG CLUTCH
B&S 5,5/6,5 Hp. INT.	592.56265 (1)
B&S 8 Hp. INT.	592.47907
Honda Gx160	592.56265 (1)
Honda Gx240	592.56253
Honda Gx340	592.56257

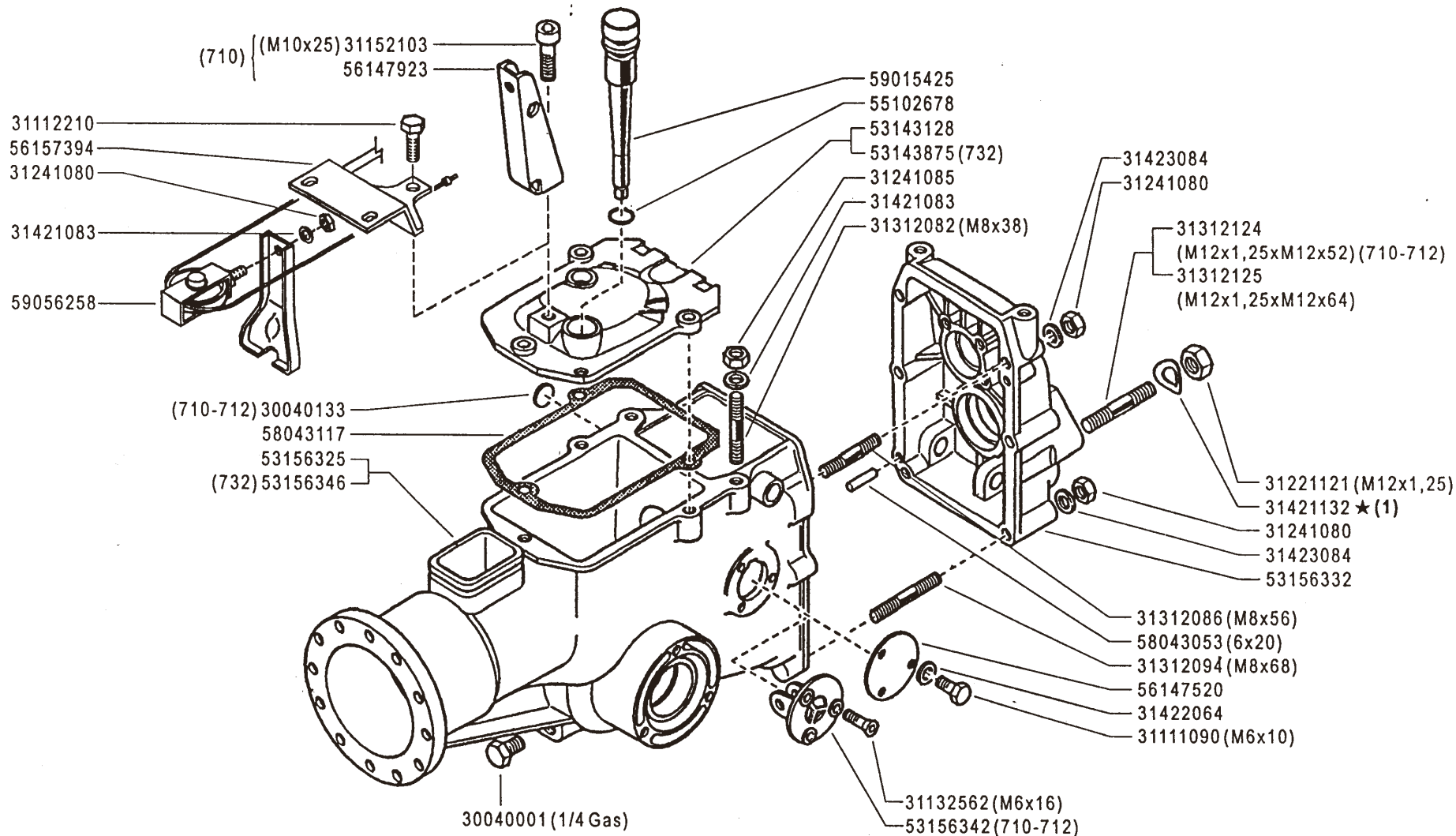
**! NON SMONTARE MAI LA FRIZIONE
NEVER DISASSEMBLE THE CLUTCH
NE DEMONTER JAMAIS L'EMBRAYAGE
NIEMALS DIE KUPPLUNG AUSBAUEN
NO DESMONTAR JAMAS EL EMBRAGUE**

(1) sostituisce 592.56252

	700 AMERICA	CLUTCH (710-712-718-722-732)		DALLA MACCHINA DE LA MAQUINA FROM THE MACHINE AB DER MASCHINE	Rev. 02 0
		EMBRAGUE FRIZIONE A CONO AUTOVENTILANTE	EMBRAYAGE KUPPLUNG	N.	SERIES 2003

(B) serrare a 2 Kg

ZENNE



(1) sostituisce 31423130



700
AMERICA

CAJA DE CAMBIO
SCATOLA CAMBIO

GEARBOX
(710-712-718-722-732)

BOITE DE VITESSES
WECHSELGETRIEBE

DALLA MACCHINA
DE LA MAQUINA
DE LA MACHINE
FROM THE MACHINE
AB DER MASCHINE



AGGIORNAMENTO

REVISION

MISE A JOUR

APLAZAMIENTO

ANPASSUNG

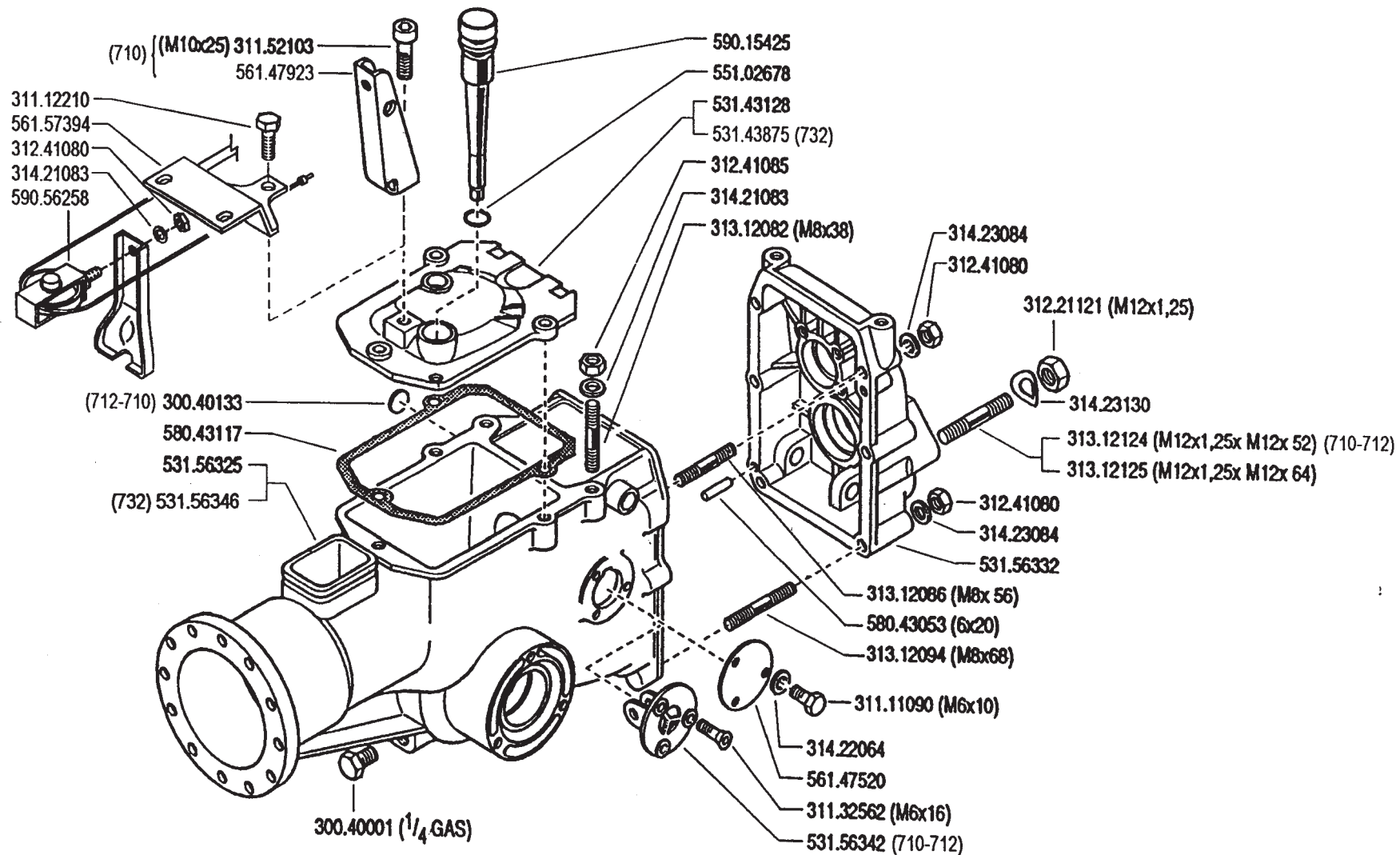
03

01/2006

Rev.

1

ZENNE



700
AMERICA

GEARBOX
(710-712-718-722-732)

CAJA DE CAMBIO
SCATOLA CAMBIO

BOITE DE VITESSES
WECHSELGETRIEBE

DALLA MACCHINA
DE LA MAQUINA
DE LA MACHINE
FROM THE MACHINE
AB DER MASCHINE

N.

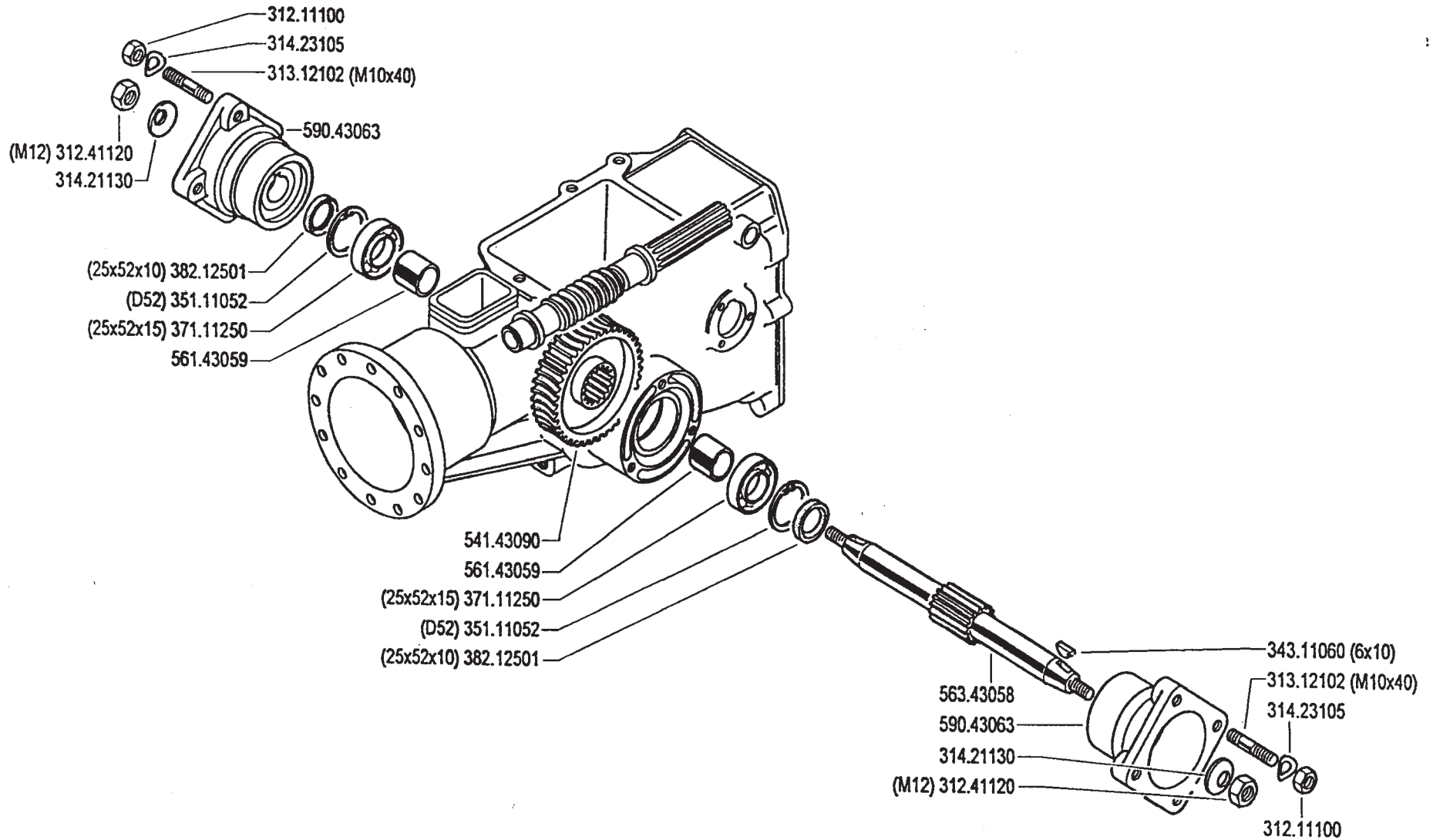
03

Rev.

0

SERIES
2003

ZENNE



700
AMERICA

WHEEL AXLE
 (710-712-718-722)

EJE RUEDAS
 ASSE RUOTE

ESSIEU ROUES
 RADACHSE

DALLA MACCHINA
 DE LA MAQUINA
 DE LA MACHINE
 FROM THE MACHINE
 AB DER MASCHINE

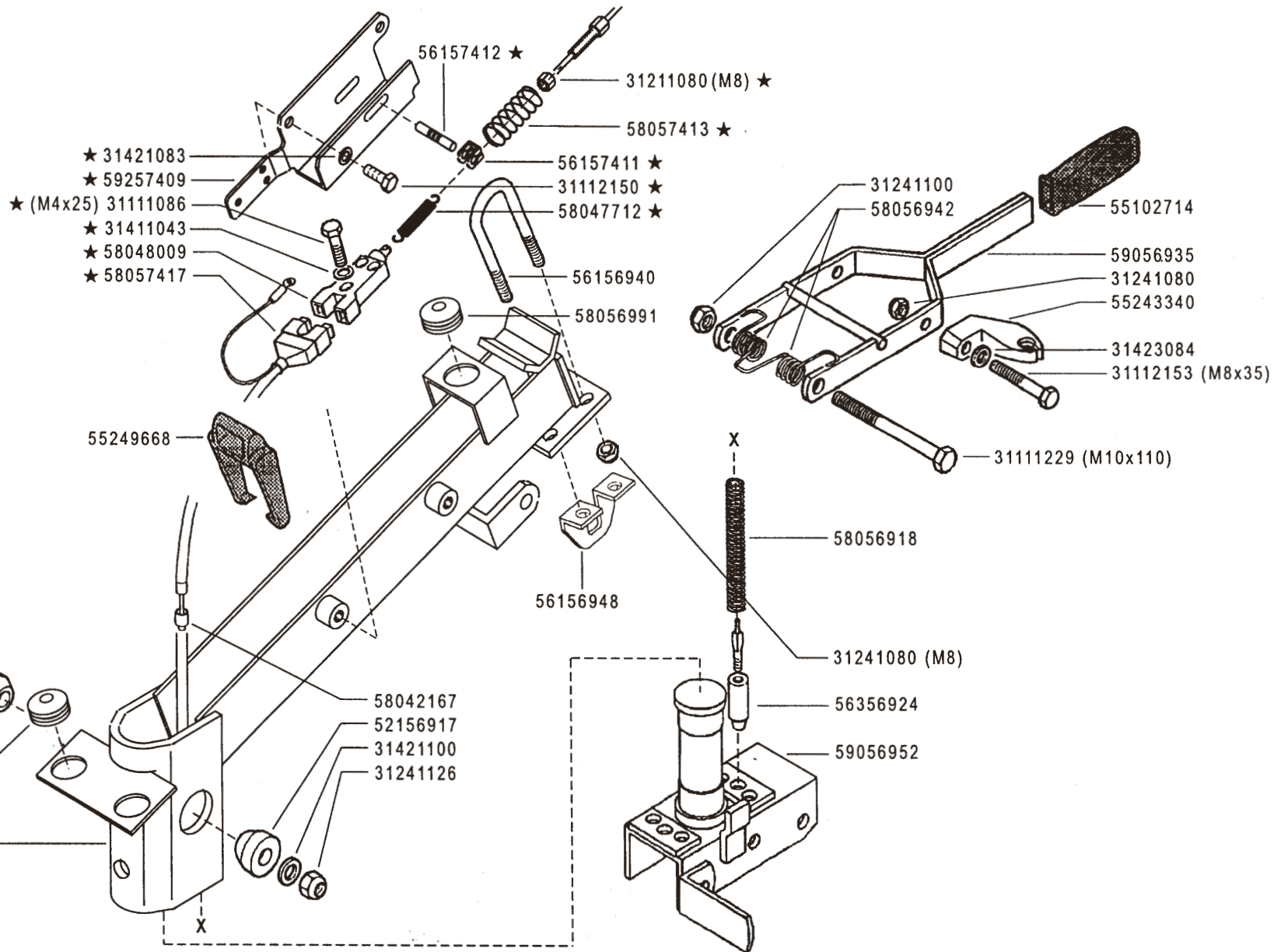
N.

06

Rev.

0

SERIES
 2003



(1) sostituisce 59056912



700
AMERICA

COLUMNA
PIANTONE

STEERING COLUMN
(712-718-722-732)

PLANTON
LENKSÄULE

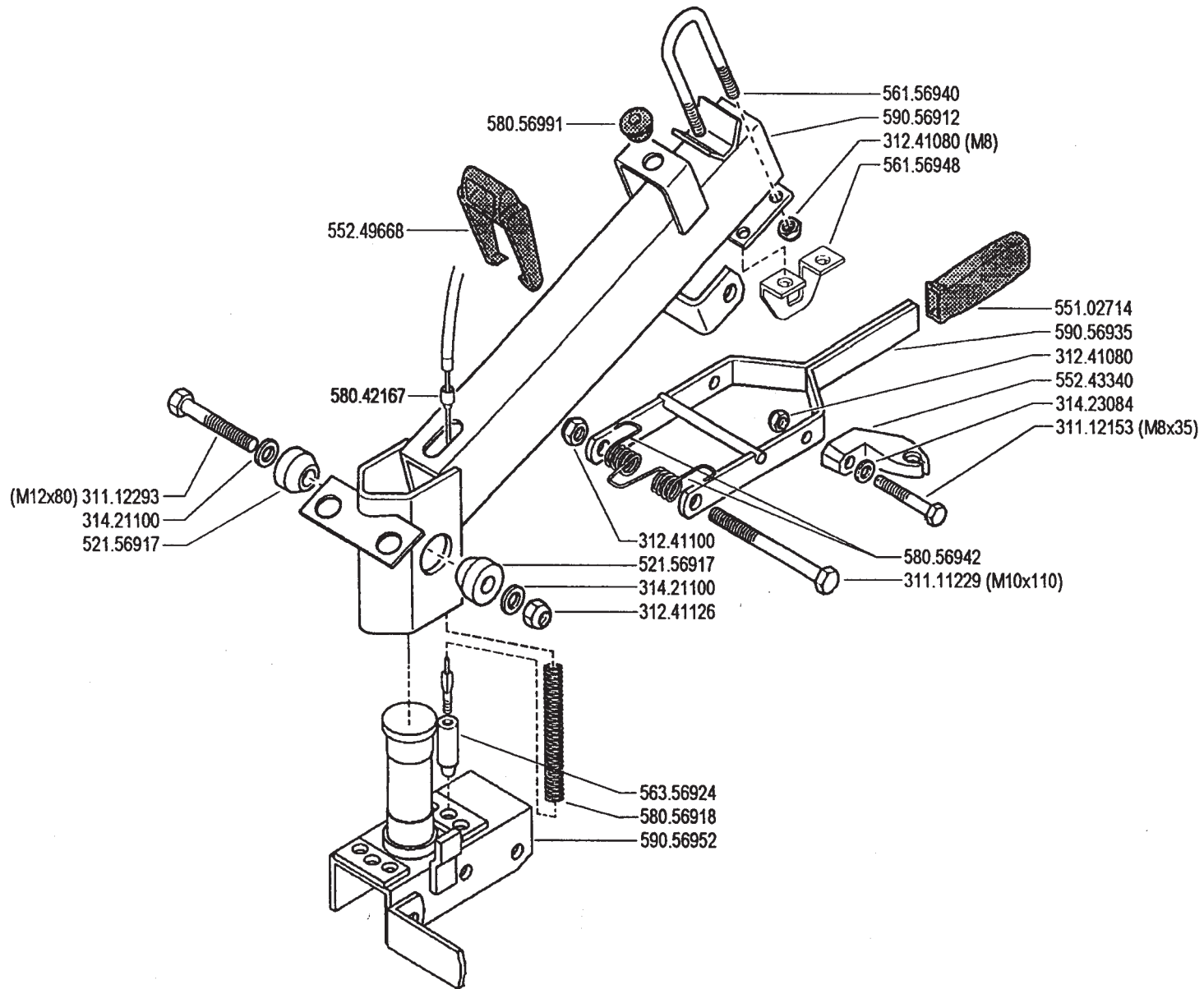
DALLA MACCHINA
DE LA MAQUINA
DE LA MACHINE
FROM THE MACHINE
AB DER MASCHINE

★ N.

748215
(732) 753751

09
1
11/2005

ZENNE



700
AMERICA

STEERING COLUMN
(712-718-722-732)

COLUMNA
PIANTONE

PLANTON
LENKSÄULE

DALLA MACCHINA
DE LA MAQUINA
DE LA MACHINE
FROM THE MACHINE
AB DER MASCHINE

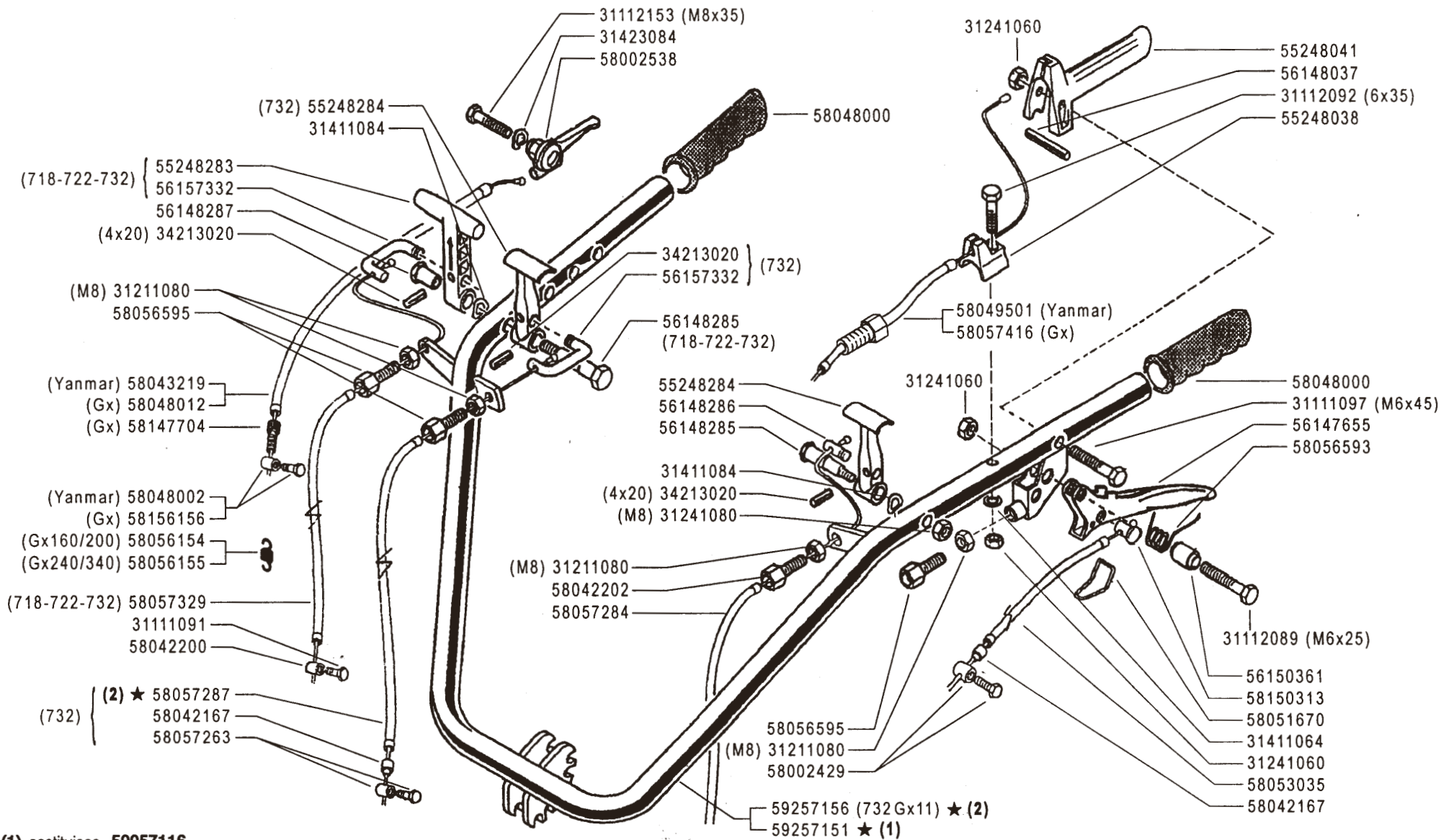
N.

09

Rev.

0

SERIES
2003



(1) sostituisce 59057116



700
AMERICA

MANILLAR
 MANUBRIO

HANDLEBAR
 (712-718-722-732)

MANCHERON
 LENKER

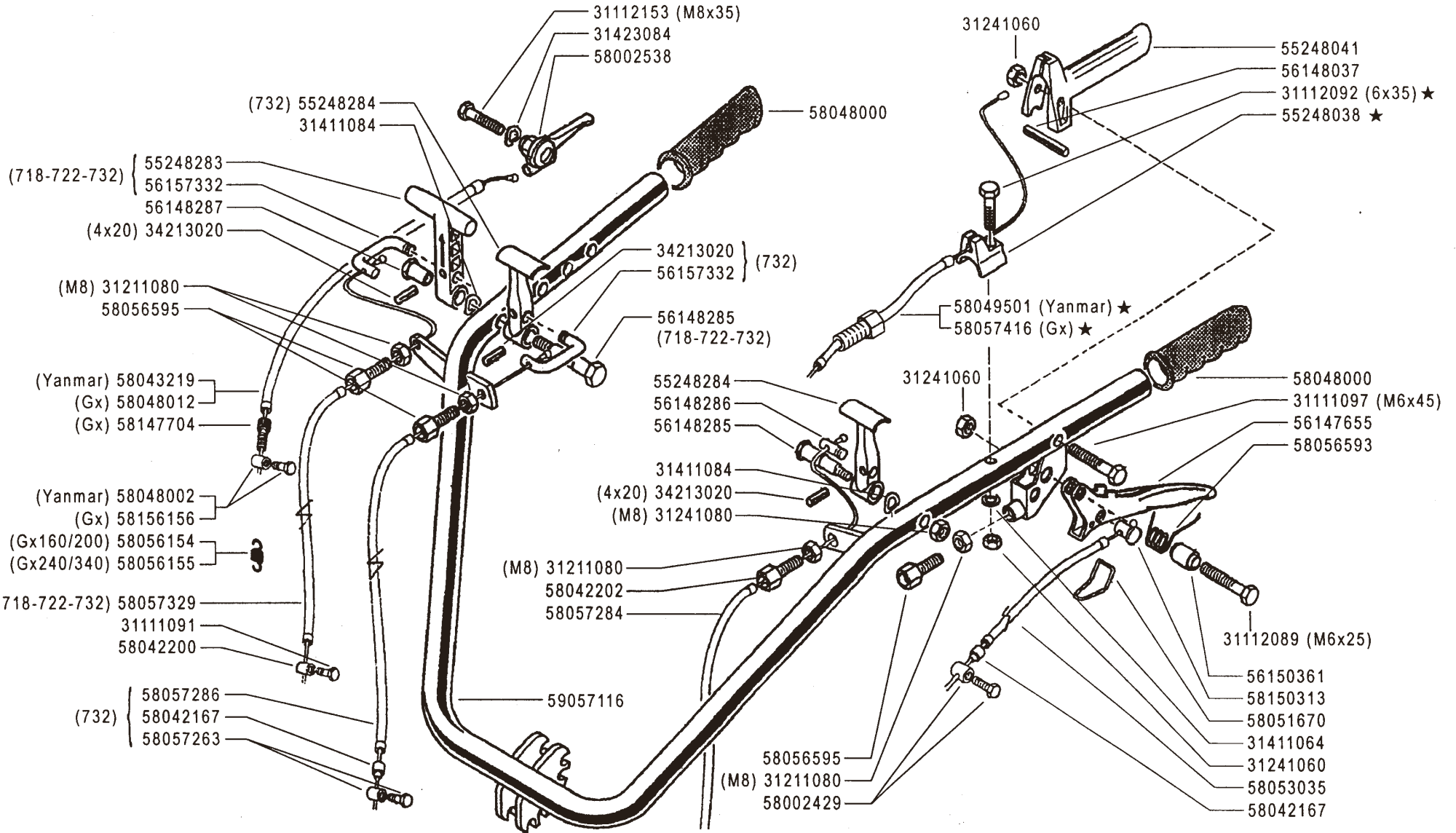
DALLA MACCHINA
 DE LA MAQUINA
 DE LA MACHINE
 FROM THE MACHINE
 AB DER MASCHINE

★ N.

(2) 762216

11 3

04/2006



700
AMERICA

HANDLEBAR
(712-718-722-732)

MANILLAR
MANUBRIO

MANCHERON
LENKER

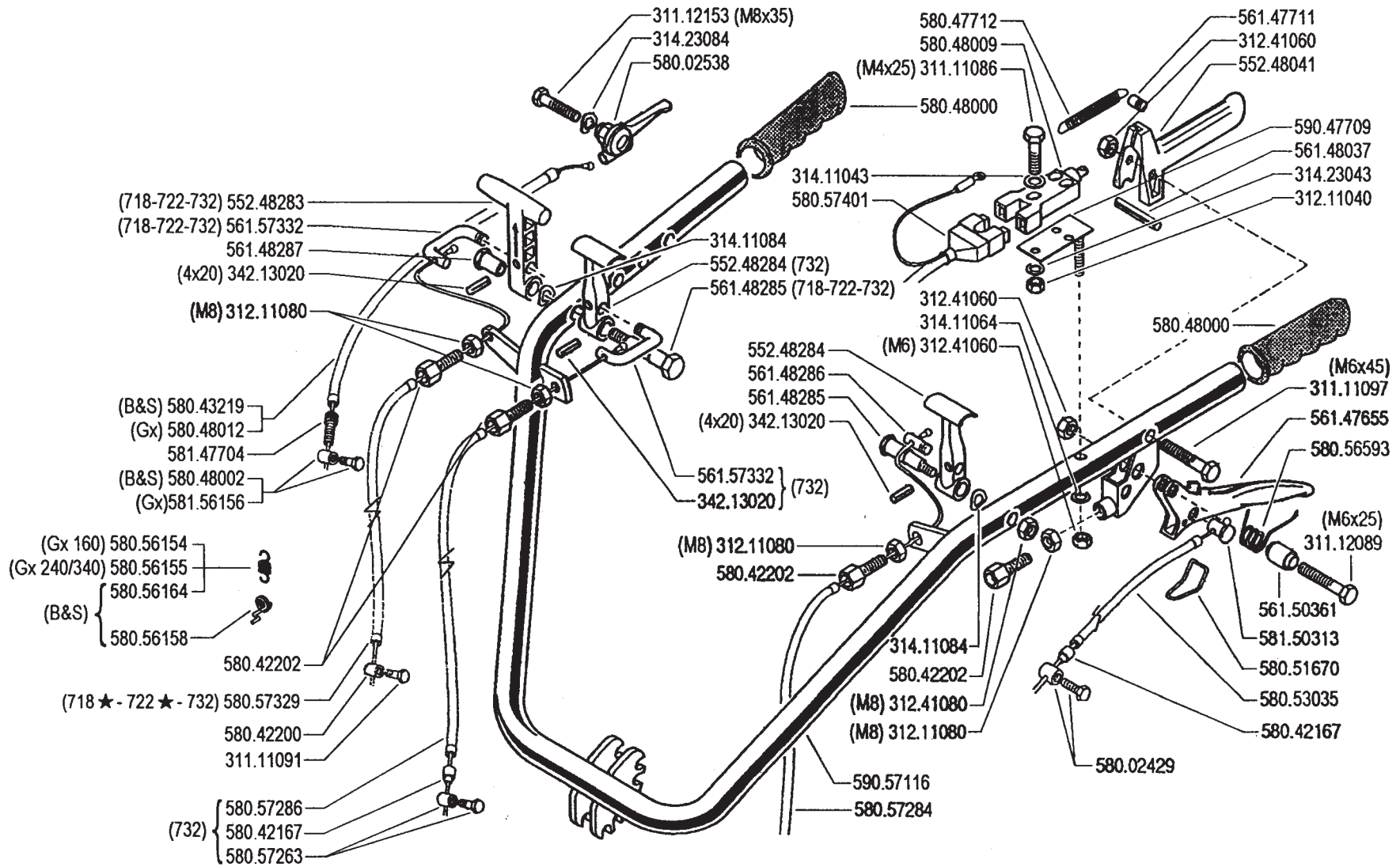
DALLA MACCHINA
DE LA MAQUINA
DE LA MACHINE
FROM THE MACHINE
AB DER MASCHINE

★ N.

748215
(732) 753751

11
2
11/2005

ZENNE



**700
AMERICA**

**HANDLEBAR
(712-718-722-732)**

MANILLAR
MANUBRIO

MANCHERON
LENKER

DALLA MACCHINA
DE LA MAQUINA
DE LA MACHINE
FROM THE MACHINE
AB DER MASCHINE

AGGIORNAMENTO
REVISION
MISE A JOUR
APLAZAMIENTO
ANPASSUNG

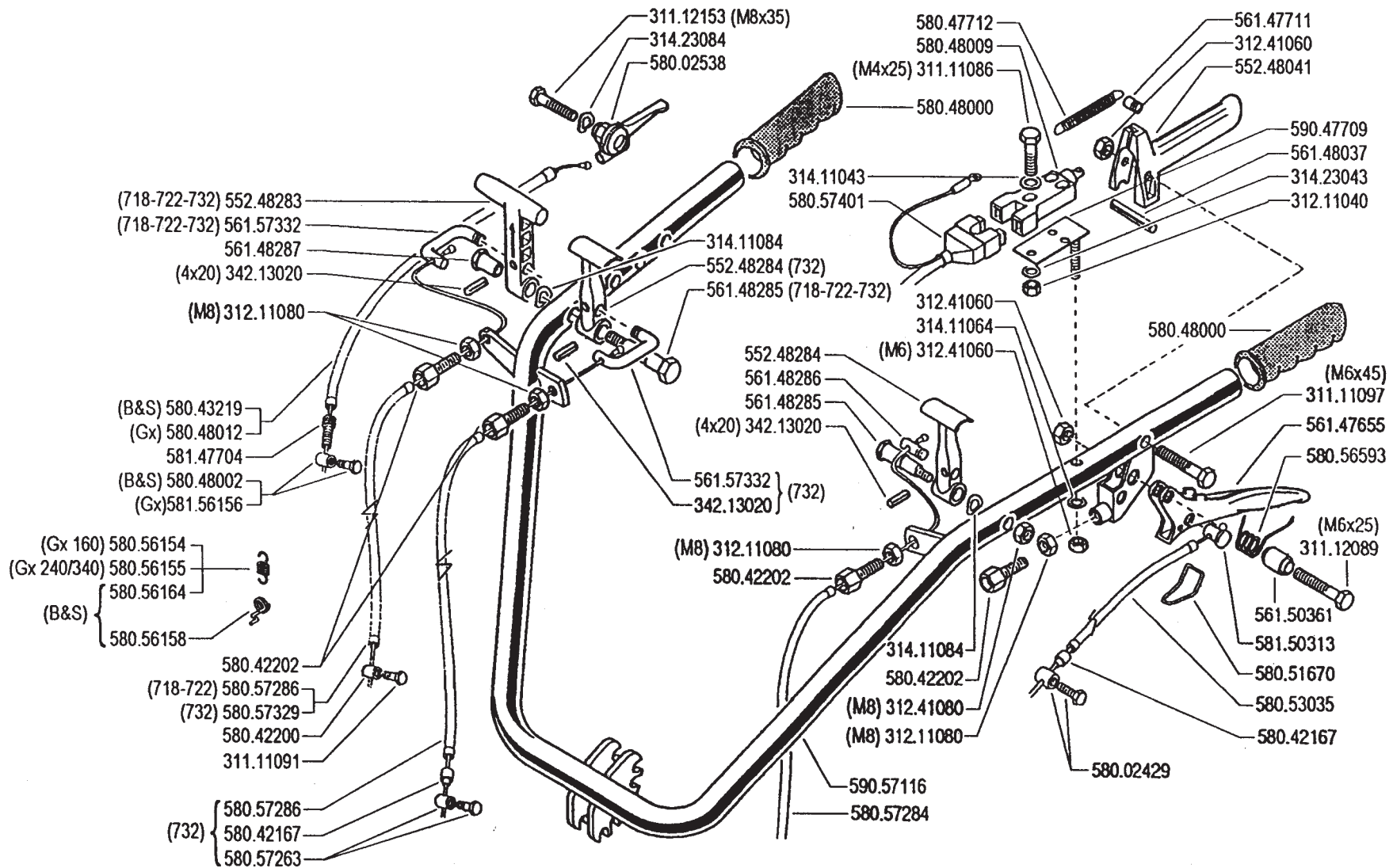
11

Rev.
1

12/2003

N.

ZENNE



700
AMERICA

HANDLEBAR
(712-718-722-732)

MANILLAR
MANUBRIO

MANCHERON
LENKER

DALLA MACCHINA
DE LA MAGUINA
DE LA MACHINE
FROM THE MACHINE
AB DER MASCHINE

N.

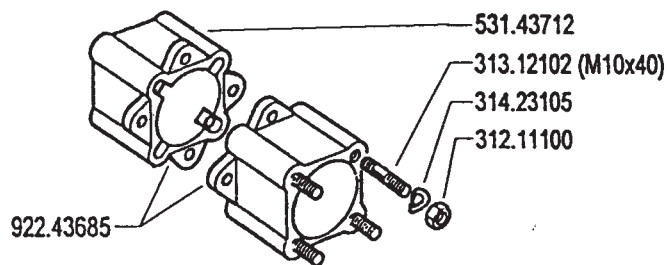
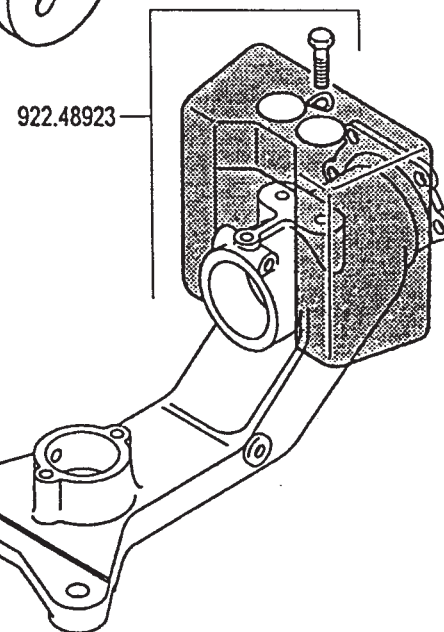
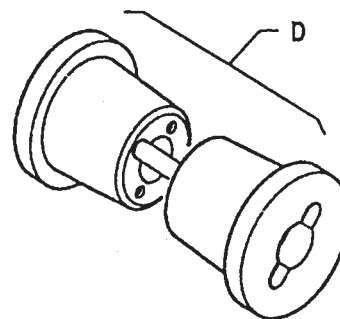
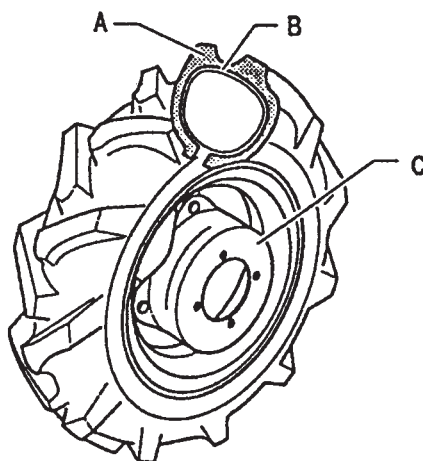
11 0

SERIES
2003

Rev.

ZENNE

	A	B	C	D
3.50 - 8"	391.13502	394.13502	580.43250	922.43686 (Kg.10)
4.00 - 8"	391.14008	394.14008	580.43250	922.43686 (Kg.10)
4.0 - 10"	391.14010	394.14010	580.48330	922.48715 (Kg.15)
5.0 - 10"	391.15010	394.15010	580.48330	922.48715 (Kg.15)
5.00 - 12"	391.15012	394.15012	580.44804	922.48720 (Kg.34)



**700
AMERICA**

WHEELS

RUEDAS
RUOTE

ROUES
RÄDER

DALLA MACCHINA
DE LA MAQUINA
DE LA MACHINE
FROM THE MACHINE
AB DER MASCHINE

N.

14 0

SERIES
2003

Rev.

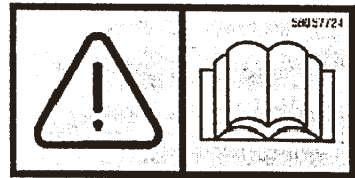
ZENNE



58057767 ★



58057768 ★



58057724

58057770 KUPPLUNG
EMBRAYAGE
EMBRAGUE
CLUTCH
FRIZIONE

58057770 ★

58047959

CHECK OIL BEFORE STARTING

- ENGINE CRANKCASE- SAE 10W40 OIL - FILL TO EDGE OF FILLER HOLE- CHECK EVERY 4 HOURS
- TRANSMISSION - 90 EP GEAR OIL
- IMPLEMENTS DRIVING UNIT-90EP GEAR OIL LEVEL WITH FILLER PLUG



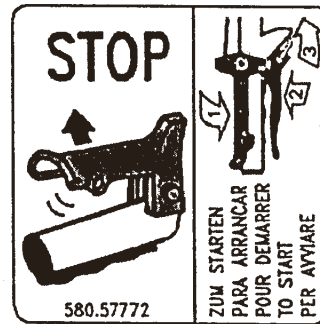
58057676



58057677



58057678



58057772 ★

TO START

- SET CLUTCH LATCH (SEE DECAL ON HANDLE)
- MOVE THROTTLE TO MIDDLE POSITION
- OPEN FUEL VALVE AT FUEL TANK
- LIFT CHOKE LEVER UP TO CHOKE FOR COLD START FOOT HERE

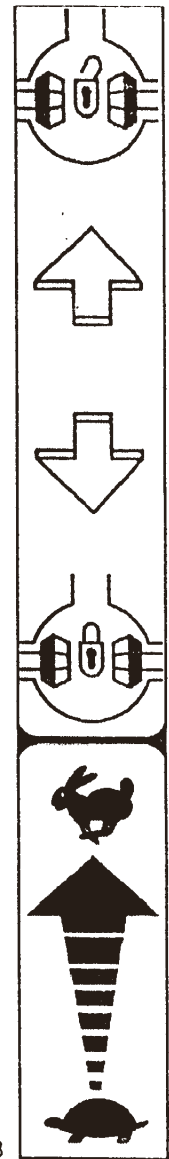
FOR STARTING

- STABILIZE MACHINE
- GRASP STARTER HANDLE AND PULL FIRMLY- ELECTRIC START MODELS-TURN KEY
- MOVE CHOKE DOWN TO OFF

58047960



58047953



58057688



700
AMERICA

STICKERS

ADHESIVOS
ADESM

AUTOCOLLANTS
AUFKLEBES

DALLA MACCHINA
DE LA MAQUINA
DE LA MACHINE
FROM THE MACHINE
AB DER MASCHINE

AGGIORNAMENTO
REVISION
MISE A JOUR
APLAZAMIENTO
ANPASSUNG

15

01/2006

Rev.

1

★N.

ZENNE



WARNING
MUFFLER AREA MAY EXCEED 150°F


580.47953

DANGER
STOP ENGINE AND ALLOW TO COOL BEFORE REFUELLING.

580.47961
580.47962
580.47950

TO START

- SET CLUTCH LATCH (SEE DECAL ON HANDLE)
- MOVE THROTTLE TO MIDDLE POSITION
- OPEN FUEL VALVE AT FUEL TANK
- LIFT CHOKE LEVER UP TO CHOKE FOR COLD START FOOT HERE



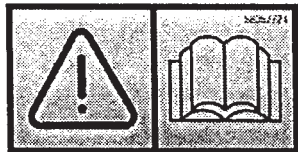
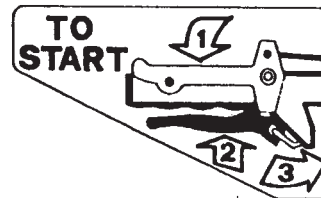
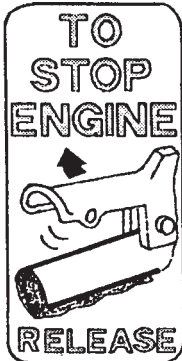
FOR STARTING

- STABILIZE MACHINE
- GRASP STARTER HANDLE AND PULL FIRMLY- ELECTRIC START MODELS-TURN KEY
- MOVE CHOKE DOWN TO OFF

CHECK OIL BEFORE STARTING

- ENGINE CRANKCASE- SAE 10W40 OIL - FILL TO EDGE OF FILLER HOLE- CHECK EVERY 4 HOURS
- TRANSMISSION - 90 EP GEAR OIL
- IMPLEMENTS DRIVING UNIT-90EP GEAR OIL LEVEL WITH FILLER PLUG

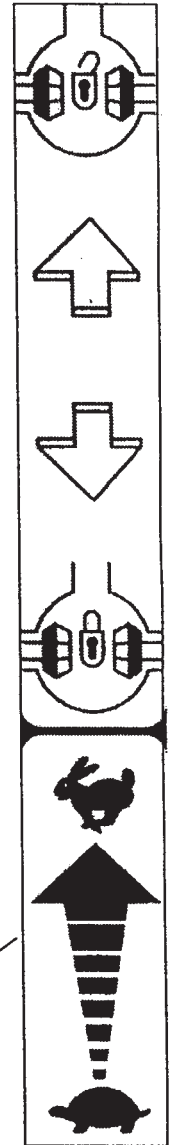
580.47959
580.47951
580.57724
580.47952



CLUTCH



580.57676
580.57678
580.57677
580.47960
580.57688



700
AMERICA

STICKERS

ADHESIVOS
ADESM

AUTOCOLLANTS
AUFKLEBES

DALLA MACCHINA
DE LA MAQUINA
DE LA MACHINE
FROM THE MACHINE
AB DER MASCHINE

N.

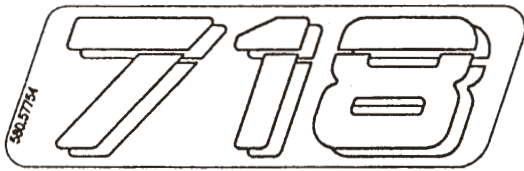
15

Rev.

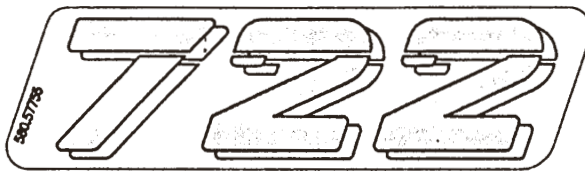
0

SERIES
2003

ZENNE



58057754



58057755



58057626 ★



58057752



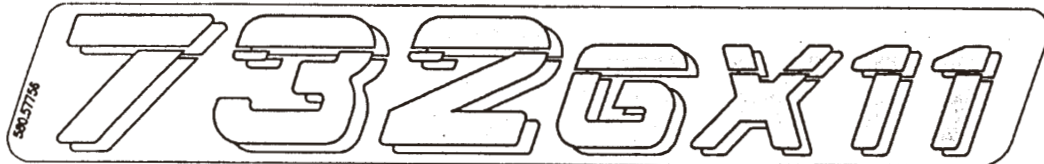
58057759



58057753



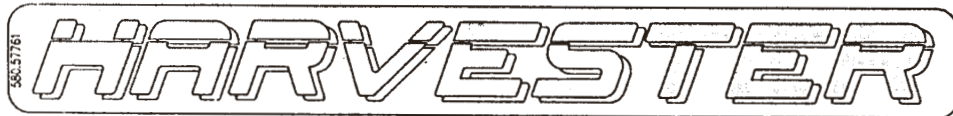
53048656



58057756



58057681



58057761



58057692



58057762



700
AMERICA

STICKERS

ADHESIVOS
ADESM

AUTOCOLLANTS
AUFKLEBES

DALLA MACCHINA
DE LA MAQUINA
DE LA MACHINE
FROM THE MACHINE
AB DER MASCHINE

AGGIORNAMENTO

REVISION

MISE A JOUR

APLAZAMIENTO

ANPASSUNG

★ N.

16

Rev.

1

01/2006

ZENNE

580.57752 **PROFESSIONAL**

580.57761 **HARVESTER**

580.57752 **712GX5**

580.57753 **712GX8**

580.57754 **732GX11**

580.57755 **722**

580.57754 **718**

580.57759 **BCS**

580.57762
580.57761
580.57752
580.57753
580.57756

580.57681
530.48656

710

BCS

580.57692

GARDENER
BCS



**700
AMERICA**

STICKERS

ADHESIVOS
ADESM

AUTOCOLLANTS
AUFKLEBES

DALLA MACCHINA
DE LA MAQUINA
DE LA MACHINE
FROM THE MACHINE
AB DER MASCHINE

N.

16

Rev.
0

SERIES
2003